

## MMP11 Rabbit mAb

Catalog No: #59038

Package Size: #59038-1 50ul #59038-2 100ul

Orders: order@signalwayantibody.com

Support: tech@signalwayantibody.com

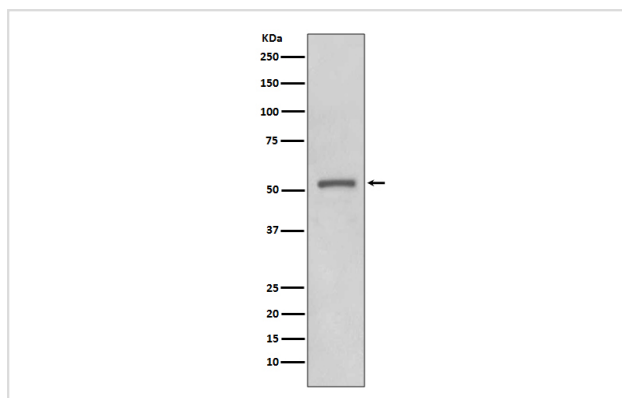
## Description

Product Name	MMP11 Rabbit mAb
Host Species	Rabbit
Clonality	Monoclonal
Isotype	Rabbit IgG
Purification	Affinity-chromatography
Applications	WB IHC ICC/IF
Species Reactivity	Human Mouse Rat
Specificity	MMP11 Antibody detects endogenous levels of MMP11
Immunogen Description	A synthesized peptide derived from human MMP11
Other Names	Matrix Metalloproteinase 11; MMP-11; SL-3; SL3; ST3; STMY3; Stromelysin 3; Stromelysin III;
Accession No.	Uniprot:P24347
Uniprot	P24347
Formulation	Rabbit IgG in phosphate buffered saline , pH 7.4, 150mM NaCl, 0.02% sodium azide and 50% glycerol.
Storage	Store at +4°C short term. Store at -20°C long term. Avoid freeze / thaw cycle.

## Application Details

WB 1:500~1:1000 IHC 1:50~1:200 ICC/IF 1:50~1:200

## Images



Western blot analysis of MMP11 expression in MCF-7 cell lysate.

## Product Description

The matrix metalloproteinases (MMP) are a family of peptidase enzymes responsible for the degradation of extracellular matrix components, including collagen, gelatin, fibronectin, laminin and proteoglycan. May play an important role in the progression of epithelial malignancies.

## Background

---

The matrix metalloproteinases (MMP) are a family of peptidase enzymes responsible for the degradation of extracellular matrix components, including collagen, gelatin, fibronectin, laminin and proteoglycan. May play an important role in the progression of epithelial malignancies.

---

Note: This product is for in vitro research use only