

IRF3 Rabbit mAb

Catalog No: #59039

Package Size: #59039-1 50ul #59039-2 100ul

Orders: order@signalwayantibody.com

Support: tech@signalwayantibody.com

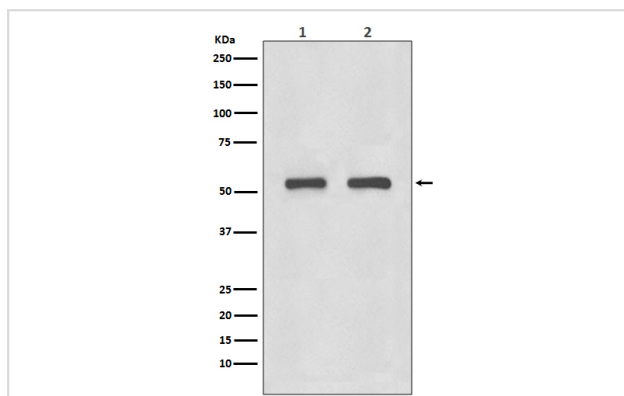
Description

Product Name	IRF3 Rabbit mAb
Host Species	Rabbit
Clonality	Monoclonal
Isotype	Rabbit IgG
Purification	Affinity-chromatography
Applications	WB IHC ICC/IF FC
Species Reactivity	Human Mouse Rat
Specificity	IRF3 Antibody detects endogenous levels of IRF3
Immunogen Description	A synthesized peptide derived from human IRF3
Other Names	IRF3; IRF-3; IRF3; Interferon regulatory factor 3;
Accession No.	Uniprot:Q14653
Uniprot	Q14653
Formulation	Rabbit IgG in phosphate buffered saline , pH 7.4, 150mM NaCl, 0.02% sodium azide and 50% glycerol.
Storage	Store at +4°C short term. Store at -20°C long term. Avoid freeze / thaw cycle.

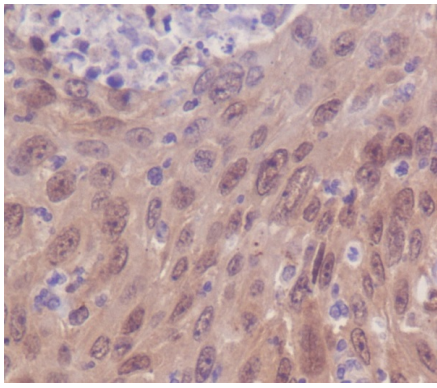
Application Details

WB 1:500~1:1000 IHC 1:50~1:200 ICC/IF 1:50~1:200 FC 1:100

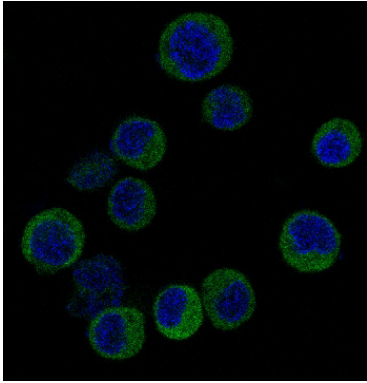
Images



Western blot analysis of IRF3 expression in (1) HeLa cell lysate; (2) 3T3 cell lysate.



Immunohistochemical analysis of paraffin-embedded human cervix carcinoma, using IRF3 Antibody.



Immunofluorescent analysis of Jurkat cells, using IRF3 Antibody.

Product Description

IRFs comprise a family of transcription factors that function within the Jak/Stat pathway to regulate interferon (IFN) and IFN-inducible gene expression in response to viral infection. IRF-3 can inhibit cell growth and plays a critical role in controlling the expression of genes in the innate immune response.

Background

IRFs comprise a family of transcription factors that function within the Jak/Stat pathway to regulate interferon (IFN) and IFN-inducible gene expression in response to viral infection. IRF-3 can inhibit cell growth and plays a critical role in controlling the expression of genes in the innate immune response.

Note: This product is for in vitro research use only