

## Integrin alpha 2 Rabbit mAb

Catalog No: #59044

Package Size: #59044-1 50ul #59044-2 100ul

Orders: order@signalwayantibody.com

Support: tech@signalwayantibody.com

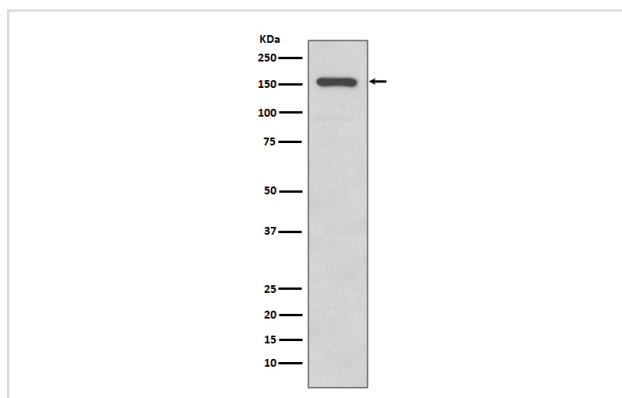
## Description

Product Name	Integrin alpha 2 Rabbit mAb
Host Species	Rabbit
Clonality	Monoclonal
Isotype	Rabbit IgG
Purification	Affinity-chromatography
Applications	WB IHC ICC/IF IP FC
Species Reactivity	Human Mouse Rat
Specificity	Integrin alpha 2 Antibody detects endogenous levels of Integrin alpha 2
Immunogen Description	A synthesized peptide derived from human Integrin alpha 2
Other Names	BR; CD 49b; CD49 antigen like family member B; Collagen receptor; GPIa; HPA5; ITGA2; Platelet glycoprotein GPIa; VLA 2 alpha chain;
Accession No.	Uniprot:P17301
Uniprot	P17301
Formulation	Rabbit IgG in phosphate buffered saline , pH 7.4, 150mM NaCl, 0.02% sodium azide and 50% glycerol.
Storage	Store at +4°C short term. Store at -20°C long term. Avoid freeze / thaw cycle.

## Application Details

WB 1:1000~1:2000 IHC 1:50~1:200 ICC/IF 1:50~1:200 IP 1:100 FC 1:100

## Images



Western blot analysis of Integrin alpha 2 expression in A431 cell lysate.

## Product Description

Integrin alpha-2/beta-1 is a receptor for laminin, collagen, collagen C-propeptides, fibronectin and E-cadherin. It recognizes the proline-hydroxylated sequence G-F-P-G-E-R in collagen. It is responsible for adhesion of platelets and other cells to collagens, modulation of collagen and collagenase gene expression, force generation and organization of newly synthesized extracellular matrix.

## Background

---

Integrin alpha-2/beta-1 is a receptor for laminin, collagen, collagen C-propeptides, fibronectin and E-cadherin. It recognizes the proline-hydroxylated sequence G-F-P-G-E-R in collagen. It is responsible for adhesion of platelets and other cells to collagens, modulation of collagen and collagenase gene expression, force generation and organization of newly synthesized extracellular matrix.

---

Note: This product is for in vitro research use only