

Cytokeratin 7 Rabbit mAb

Catalog No: #59045

Package Size: #59045-1 50ul #59045-2 100ul

Orders: order@signalwayantibody.com

Support: tech@signalwayantibody.com

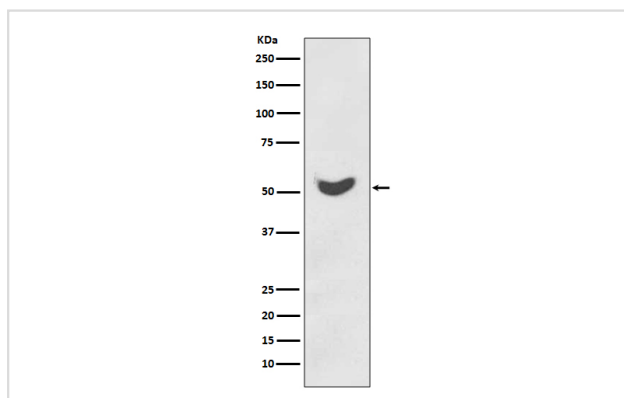
Description

| | |
|-----------------------|--|
| Product Name | Cytokeratin 7 Rabbit mAb |
| Host Species | Rabbit |
| Clonality | Monoclonal |
| Isotype | Rabbit IgG |
| Purification | Affinity-chromatography |
| Applications | WB IHC ICC/IF |
| Species Reactivity | Human Mouse Rat |
| Specificity | Cytokeratin 7 Antibody detects endogenous levels of Cytokeratin 7 |
| Immunogen Description | A synthesized peptide derived from human Cytokeratin 7 |
| Other Names | Cytokeratin-7; CK-7; Cytokeratin 7; Keratin 7; Keratin7; Keratin-7; KRT7; SCL; Sarcolectin; Type-II keratin Kb7; Krt2-7; Keratin type II cytoskeletal 7; |
| Accession No. | Uniprot:P08729 |
| Uniprot | P08729 |
| Formulation | Rabbit IgG in phosphate buffered saline , pH 7.4, 150mM NaCl, 0.02% sodium azide and 50% glycerol. |
| Storage | Store at +4°C short term. Store at -20°C long term. Avoid freeze / thaw cycle. |

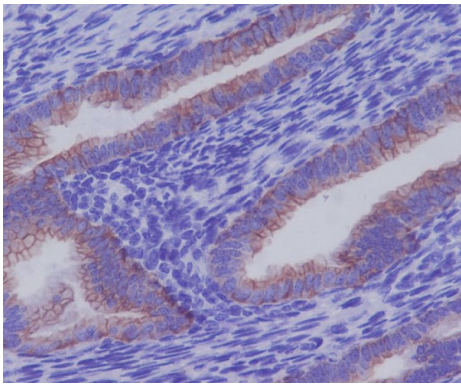
Application Details

WB 1:500~1:1000 IHC 1:100~1:500 ICC/IF 1:50~1:200

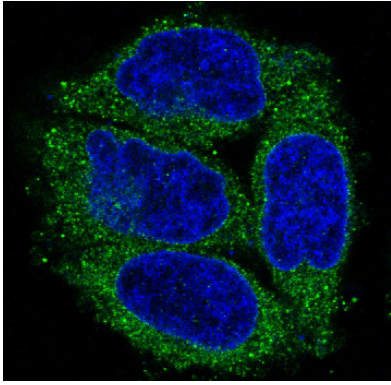
Images



Western blot analysis of Cytokeratin 7 expression in HeLa cell lysate.



Immunohistochemical analysis of paraffin-embedded human uterus, using Cytokeratin 7 Antibody.



Immunofluorescent analysis of HeLa cells, using Cytokeratin 7 Antibody.

Product Description

Keratins (cytokeratins) are intermediate filament proteins that are mainly expressed in epithelial cells. Blocks interferon-dependent interphase and stimulates DNA synthesis in cells. Involved in the translational regulation of the human papillomavirus type 16 E7 mRNA (HPV16 E7).

Background

Keratins (cytokeratins) are intermediate filament proteins that are mainly expressed in epithelial cells. Blocks interferon-dependent interphase and stimulates DNA synthesis in cells. Involved in the translational regulation of the human papillomavirus type 16 E7 mRNA (HPV16 E7).

Note: This product is for in vitro research use only