

ACE2 Rabbit mAb

Catalog No: #59046

Package Size: #59046-1 50ul #59046-2 100ul

Orders: order@signalwayantibody.com

Support: tech@signalwayantibody.com

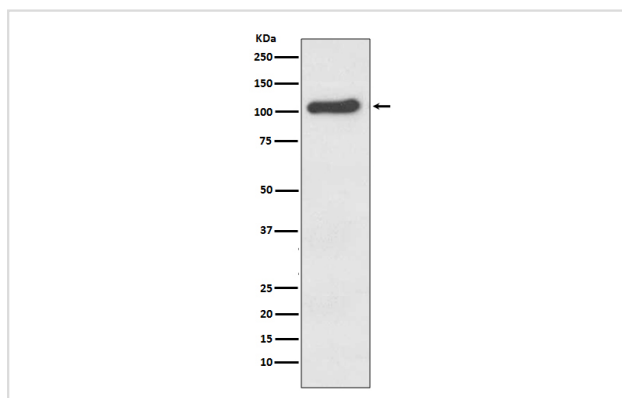
Description

Product Name	ACE2 Rabbit mAb
Host Species	Rabbit
Clonality	Monoclonal
Isotype	Rabbit IgG
Purification	Affinity-chromatography
Applications	WB IHC ICC/IF IP
Species Reactivity	Human Mouse Rat
Specificity	ACE2 Antibody detects endogenous levels of ACE2
Immunogen Description	A synthesized peptide derived from human ACE2
Other Names	Angiotensin-converting enzyme 2; ACE-related carboxypeptidase; Angiotensin-converting enzyme homolog; ACEH; Processed angiotensin-converting enzyme 2; ACE 2; ACEH;
Accession No.	Uniprot:Q9BYF1
Uniprot	Q9BYF1
Formulation	Rabbit IgG in phosphate buffered saline , pH 7.4, 150mM NaCl, 0.02% sodium azide and 50% glycerol.
Storage	Store at +4°C short term. Store at -20°C long term. Avoid freeze / thaw cycle.

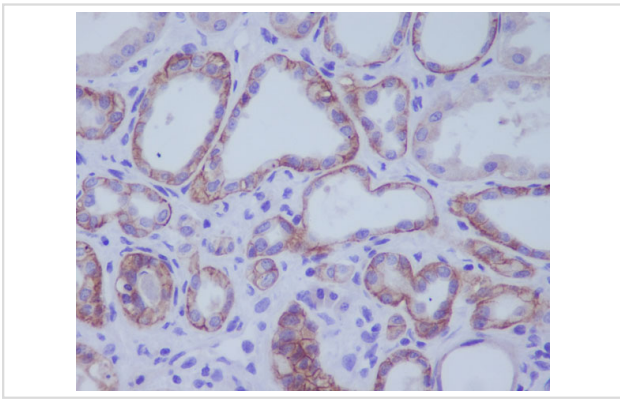
Application Details

WB 1:1000~1:2000 IHC 1:50~1:200 ICC/IF 1:50~1:200 IP 1:50

Images



Western blot analysis of ACE2 expression in Human kidney lysate.



Immunohistochemical analysis of paraffin-embedded human kidney, using ACE2 Antibody.

Product Description

ACE2 is a carboxypeptidase that catalyses the conversion of angiotensin I to angiotensin 1-9, or of angiotensin II to the vasodilator angiotensin 1-7. ACE2 is a critical component in the renin-angiotensin system (RAS). Also able to hydrolyze apelin-13 and dynorphin-13 with high efficiency. May be an important regulator of heart function.

Background

ACE2 is a carboxypeptidase that catalyses the conversion of angiotensin I to angiotensin 1-9, or of angiotensin II to the vasodilator angiotensin 1-7. ACE2 is a critical component in the renin-angiotensin system (RAS). Also able to hydrolyze apelin-13 and dynorphin-13 with high efficiency. May be an important regulator of heart function.

Note: This product is for in vitro research use only