

Glycogen synthase Rabbit mAb

Catalog No: #59047

Package Size: #59047-1 50ul #59047-2 100ul

Orders: order@signalwayantibody.com

Support: tech@signalwayantibody.com

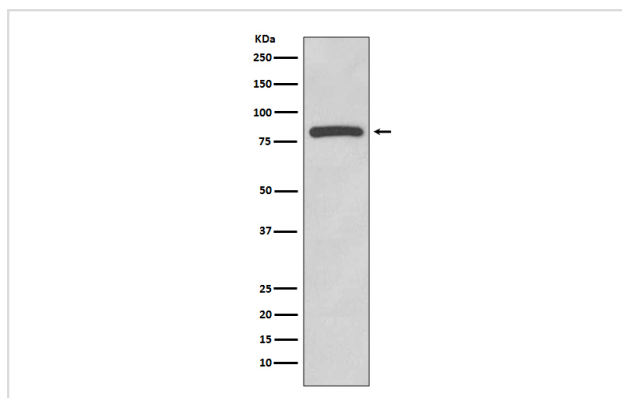
Description

Product Name	Glycogen synthase Rabbit mAb
Host Species	Rabbit
Clonality	Monoclonal
Isotype	Rabbit IgG
Purification	Affinity-chromatography
Applications	WB IHC ICC/IF IP FC
Species Reactivity	Human Mouse Rat
Specificity	Glycogen synthase Antibody detects endogenous levels of Glycogen synthase
Immunogen Description	A synthesized peptide derived from human Glycogen synthase
Other Names	Glycogen [starch] synthase; Glycogen synthase 1 (muscle); Glycogen synthase 1; GSY; GYS; Gys1; muscle;
Accession No.	Uniprot:P13807
Uniprot	P13807
Formulation	Rabbit IgG in phosphate buffered saline , pH 7.4, 150mM NaCl, 0.02% sodium azide and 50% glycerol.
Storage	Store at +4°C short term. Store at -20°C long term. Avoid freeze / thaw cycle.

Application Details

WB 1:5000~1:20000 IHC 1:50~1:200 ICC/IF 1:50~1:200 FC 1:50 IP 1:50

Images



Western blot analysis of Glycogen synthase expression in HeLa cell lysate.

Product Description

Glycogen synthase is a key enzyme in the regulation of glycogen synthesis. Transfers glucosyl residue from UDP-glucose to glycogen. Regulated allosterically by glucose-6-phosphate, and by PKA-mediated phosphorylation.

Background

Glycogen synthase is a key enzyme in the regulation of glycogen synthesis. Transfers glucosyl residue from UDP-glucose to glycogen. Regulated allosterically by glucose-6-phosphate, and by PKA-mediated phosphorylation.

Note: This product is for in vitro research use only