

CD10 Rabbit mAb

Catalog No: #59049

Package Size: #59049-1 50ul #59049-2 100ul

Orders: order@signalwayantibody.com

Support: tech@signalwayantibody.com

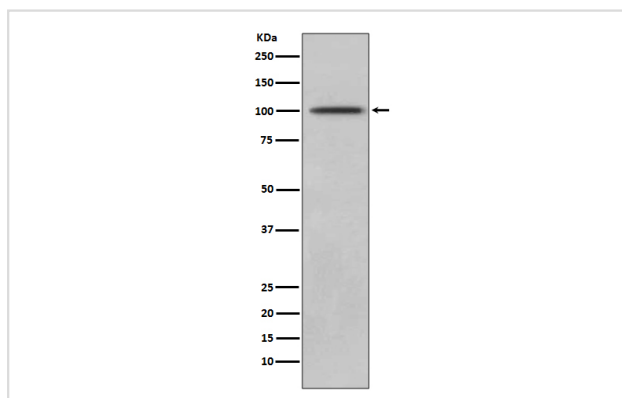
Description

| | |
|-----------------------|--------------------------------------------------------------------------------------------------------------------------------------------------------------------------------------------------------|
| Product Name | CD10 Rabbit mAb |
| Host Species | Rabbit |
| Clonality | Monoclonal |
| Isotype | Rabbit IgG |
| Purification | Affinity-chromatography |
| Applications | WB FC |
| Species Reactivity | Human Mouse Rat |
| Specificity | CD10 Antibody detects endogenous levels of CD10 |
| Immunogen Description | A synthesized peptide derived from human CD10 |
| Other Names | Atriopeptidase; CALLA; CD10; CD10 antigen; Enkephalinase; EPN; Membrane metallo endopeptidase (neutral endopeptidase, enkephalinase, CALLA, CD10); CALLA CD10; NEP; Neprilysin; Neutral endopeptidase; |
| Accession No. | Uniprot:P08473 |
| Uniprot | P08473 |
| Formulation | Rabbit IgG in phosphate buffered saline , pH 7.4, 150mM NaCl, 0.02% sodium azide and 50% glycerol. |
| Storage | Store at +4°C short term. Store at -20°C long term. Avoid freeze / thaw cycle. |

Application Details

WB 1:1000~1:2000 FC 1:50

Images



Western blot analysis of CD10 expression in Jurkat lysate.

Product Description

CD10 is a transmembrane type II molecule and functions as a metallo-peptidase requiring zinc. Specifically, CD10 cleaves 1-3 amino-terminal amino acids from peptides with a preference for neutral amino acids (valine, iso-leucine, phenylalanine, leucine or alanine). Involved in the degradation of atrial natriuretic factor (ANF). Displays UV-inducible elastase activity toward skin preelastic and elastic fibers.

Background

CD10 is a transmembrane type II molecule and functions as a metallo-peptidase requiring zinc. Specifically, CD10 cleaves 1-3 amino-terminal amino acids from peptides with a preference for neutral amino acids (valine, iso-leucine, phenylalanine, leucine or alanine). Involved in the degradation of atrial natriuretic factor (ANF). Displays UV-inducible elastase activity toward skin preelastic and elastic fibers.

Note: This product is for in vitro research use only