

BRG1 Rabbit mAb

Catalog No: #59052

Package Size: #59052-1 50ul #59052-2 100ul

Orders: order@signalwayantibody.com

Support: tech@signalwayantibody.com

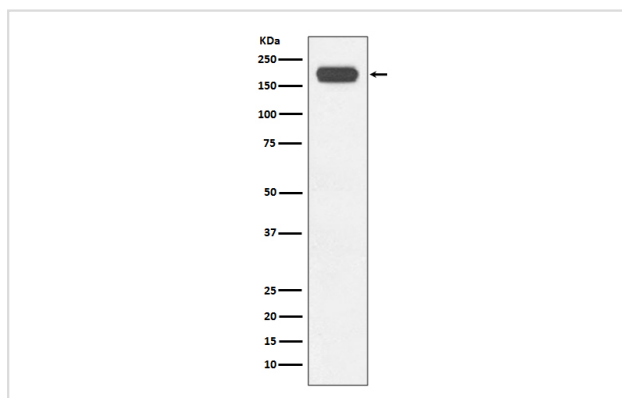
Description

Product Name	BRG1 Rabbit mAb
Host Species	Rabbit
Clonality	Monoclonal
Isotype	Rabbit IgG
Purification	Affinity-chromatography
Applications	WB IHC ICC/IF IP ChIP
Species Reactivity	Human Mouse Rat
Specificity	BRG1 Antibody detects endogenous levels of BRG1
Immunogen Description	A synthesized peptide derived from human BRG1
Other Names	ATP-dependent helicase SMARCA4; BRG1-associated factor 190A; BAF190A; Mitotic growth and transcription activator; Protein BRG-1; Protein brahma homolog 1; SNF2-beta;
Accession No.	Uniprot:P51532
Uniprot	P51532
Formulation	Rabbit IgG in phosphate buffered saline , pH 7.4, 150mM NaCl, 0.02% sodium azide and 50% glycerol.
Storage	Store at +4°C short term. Store at -20°C long term. Avoid freeze / thaw cycle.

Application Details

WB 1:5000~1:20000 IHC 1:50~1:200 ICC/IF 1:50~1:200 IP 1:50 ChIP

Images



Western blot analysis of BRG1 expression in HeLa cell lysate.

Product Description

ATP-dependent chromatin remodeling complexes play an essential role in the regulation of various nuclear processes, such as gene expression, DNA replication, and repair. Acts as a corepressor of ZEB1 to regulate E-cadherin transcription and is required for induction of epithelial-mesenchymal transition (EMT) by ZEB1.

Background

ATP-dependent chromatin remodeling complexes play an essential role in the regulation of various nuclear processes, such as gene expression, DNA replication, and repair. Acts as a corepressor of ZEB1 to regulate E-cadherin transcription and is required for induction of epithelial-mesenchymal transition (EMT) by ZEB1.

Note: This product is for in vitro research use only