

RON Rabbit mAb

Catalog No: #59055

Package Size: #59055-1 50ul #59055-2 100ul

Orders: order@signalwayantibody.com

Support: tech@signalwayantibody.com

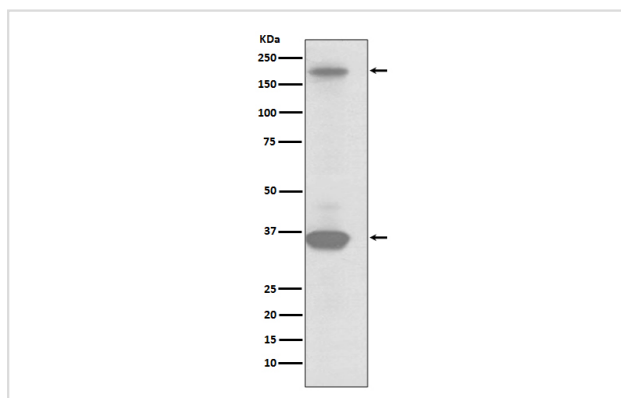
Description

Product Name	RON Rabbit mAb
Host Species	Rabbit
Clonality	Monoclonal
Isotype	Rabbit IgG
Purification	Affinity-chromatography
Applications	WB IHC ICC/IF IP FC
Species Reactivity	Human
Specificity	RON Antibody detects endogenous levels of RON
Immunogen Description	A synthesized peptide derived from human RON
Other Names	c met related tyrosine kinase; CD136 antigen; Macrophage stimulating 1 receptor; MSP receptor; p185 RON; PTK 8 Stem cell derived tyrosine kinase; MST1R variant RON30; MST1R variant RON62;
Accession No.	Uniprot:Q04912
Uniprot	Q04912
Formulation	Rabbit IgG in phosphate buffered saline , pH 7.4, 150mM NaCl, 0.02% sodium azide and 50% glycerol.
Storage	Store at +4°C short term. Store at -20°C long term. Avoid freeze / thaw cycle.

Application Details

WB 1:1000~1:2000 IHC 1:50~1:200 ICC/IF 1:50~1:200 IP 1:30 FC 1:30

Images



Western blot analysis of RON expression in SKBR3 cell lysate.

Product Description

Ron is initially synthesized in the cells as a single-chain, pro-Ron precursor that is cleaved into the two active chains. RON signaling activates the wound healing response by promoting epithelial cell migration, proliferation as well as survival at the wound site. Plays also a role in the innate immune response by regulating the migration and phagocytic activity of macrophages.

Background

Ron is initially synthesized in the cells as a single-chain, pro-Ron precursor that is cleaved into the two active chains. RON signaling activates the wound healing response by promoting epithelial cell migration, proliferation as well as survival at the wound site. Plays also a role in the innate immune response by regulating the migration and phagocytic activity of macrophages.

Note: This product is for in vitro research use only