

S100A4 Rabbit mAb

Catalog No: #59057

Package Size: #59057-1 50ul #59057-2 100ul

Orders: order@signalwayantibody.com

Support: tech@signalwayantibody.com

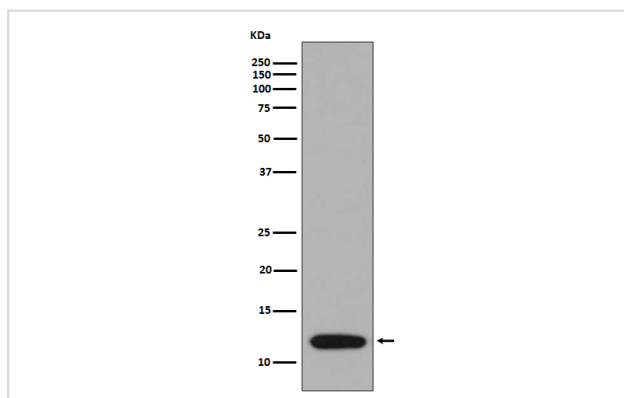
Description

Product Name	S100A4 Rabbit mAb
Host Species	Rabbit
Clonality	Monoclonal
Isotype	Rabbit IgG
Purification	Affinity-chromatography
Applications	WB IHC ICC/IF IP FC
Species Reactivity	Human Mouse Rat
Specificity	S100A4 Antibody detects endogenous levels of S100A4
Immunogen Description	A synthesized peptide derived from human S100A4
Other Names	18A2; 42A; calcium Placental protein; Calcium protein; Calvasculin; CAPL; Fibroblast specific protein 1; FSP1; Metastasin; MTS1; S100 calcium binding protein A4;
Accession No.	Uniprot:P26447
Uniprot	P26447
Formulation	Rabbit IgG in phosphate buffered saline , pH 7.4, 150mM NaCl, 0.02% sodium azide and 50% glycerol.
Storage	Store at +4°C short term. Store at -20°C long term. Avoid freeze / thaw cycle.

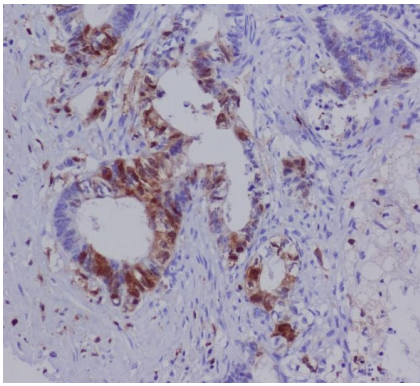
Application Details

WB 1:500~1:1000 IHC 1:100~1:500 ICC/IF 1:50~1:200 IP 1:40 FC 1:100

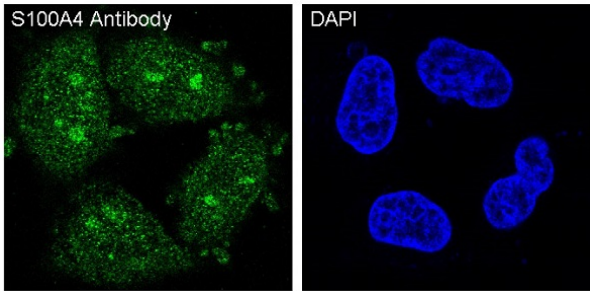
Images



Western blot analysis of S100A4 expression in A375 cell lysate.



Immunohistochemical analysis of paraffin-embedded human colon carcinoma, using S100A4 Antibody.



Immunofluorescent analysis of HeLa cells, using S100A4 Antibody.

Product Description

The protein encoded by this gene is a member of the S100 family of proteins containing 2 EF-hand calcium-binding motifs. This protein may function in motility, invasion, and tubulin polymerization. Chromosomal rearrangements and altered expression of this gene have been implicated in tumor metastasis.

Background

The protein encoded by this gene is a member of the S100 family of proteins containing 2 EF-hand calcium-binding motifs. This protein may function in motility, invasion, and tubulin polymerization. Chromosomal rearrangements and altered expression of this gene have been implicated in tumor metastasis.

Note: This product is for in vitro research use only