

## Angiotensinogen Rabbit mAb

Catalog No: #59059

Package Size: #59059-1 50ul #59059-2 100ul

Orders: order@signalwayantibody.com

Support: tech@signalwayantibody.com

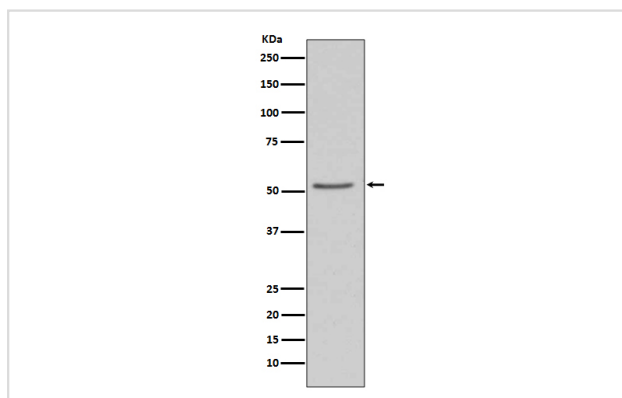
## Description

Product Name	Angiotensinogen Rabbit mAb
Host Species	Rabbit
Clonality	Monoclonal
Isotype	Rabbit IgG
Purification	Affinity-chromatography
Applications	WB ICC/IF IP
Species Reactivity	Human
Specificity	Angiotensinogen Antibody detects endogenous levels of Angiotensinogen
Immunogen Description	A synthesized peptide derived from human Angiotensinogen
Other Names	Angiotensinogen; Serpin A8; AGT; SERPINA8; Des-Asp[1]-angiotensin II; Serine (or cysteine) proteinase inhibitor;
Accession No.	Uniprot:P01019
Uniprot	P01019
Formulation	Rabbit IgG in phosphate buffered saline , pH 7.4, 150mM NaCl, 0.02% sodium azide and 50% glycerol.
Storage	Store at +4°C short term. Store at -20°C long term. Avoid freeze / thaw cycle.

## Application Details

WB 1:1000~1:2000 ICC/IF 1:50~1:200 IP 1:50

## Images



Western blot analysis of Angiotensinogen expression in 293T cell lysate.

## Product Description

Angiotensin is formed from a precursor, angiotensinogen, which is produced by the liver and found in the  $\alpha$ -globulin fraction of plasma. Angiotensin stimulation through AT1 has been shown to activate the JAK/Stat pathway involving a direct interaction between JAK2 and AT1 as demonstrated by co-immunoprecipitation.

## Background

---

Angiotensin is formed from a precursor, angiotensinogen, which is produced by the liver and found in the  $\alpha$ -globulin fraction of plasma. Angiotensin stimulation through AT1 has been shown to activate the JAK/Stat pathway involving a direct interaction between JAK2 and AT1 as demonstrated by co-immunoprecipitation.

---

Note: This product is for in vitro research use only