

IRF5 Rabbit mAb

Catalog No: #59063

Package Size: #59063-1 50ul #59063-2 100ul

Orders: order@signalwayantibody.com

Support: tech@signalwayantibody.com

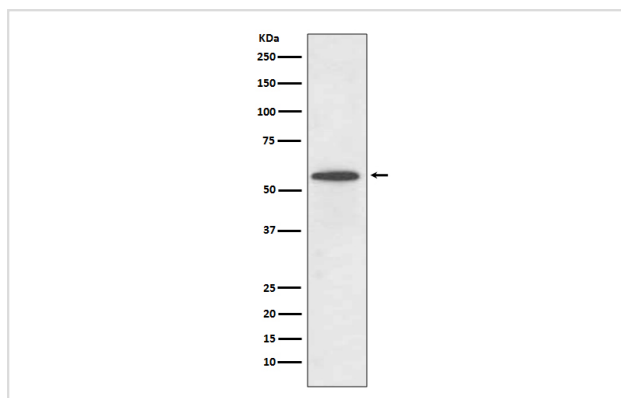
Description

Product Name	IRF5 Rabbit mAb
Host Species	Rabbit
Clonality	Monoclonal
Isotype	Rabbit IgG
Purification	Affinity-chromatography
Applications	WB IHC FC
Species Reactivity	Human
Specificity	IRF5 Antibody detects endogenous levels of IRF5
Immunogen Description	A synthesized peptide derived from human IRF5
Other Names	Interferon regulatory factor 5; Interferon regulatory factor 5 bone marrow variant; IRF 5; SLEB10;
Accession No.	Uniprot:Q13568
Uniprot	Q13568
Formulation	Rabbit IgG in phosphate buffered saline , pH 7.4, 150mM NaCl, 0.02% sodium azide and 50% glycerol.
Storage	Store at +4°C short term. Store at -20°C long term. Avoid freeze / thaw cycle.

Application Details

WB 1:1000~1:2000 IHC 1:50~1:200 FC 1:100

Images



Western blot analysis of IRF5 expression in Ramos cell lysate.

Product Description

Play an important role in pathogen defense, autoimmunity, lymphocyte development, cell growth, and susceptibility to transformation. Studies have shown that genetic variants of IRF-5 have been associated with disorders where the IFN pathway is abnormally activated, such as systemic lupus erythematosus.

Background

Play an important role in pathogen defense, autoimmunity, lymphocyte development, cell growth, and susceptibility to transformation. Studies have shown that genetic variants of IRF-5 have been associated with disorders where the IFN pathway is abnormally activated, such as systemic lupus erythematosus.

Note: This product is for in vitro research use only