

## Cytokeratin 2e Rabbit mAb

Catalog No: #59066

Package Size: #59066-1 50ul #59066-2 100ul

Orders: order@signalwayantibody.com

Support: tech@signalwayantibody.com

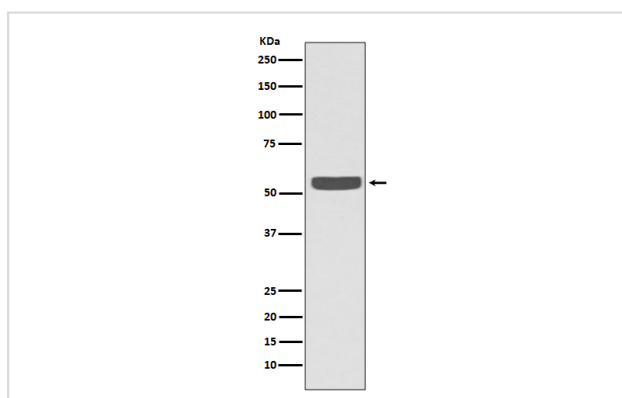
## Description

Product Name	Cytokeratin 2e Rabbit mAb
Host Species	Rabbit
Clonality	Monoclonal
Isotype	Rabbit IgG
Purification	Affinity-chromatography
Applications	WB IHC
Species Reactivity	Human
Specificity	Cytokeratin 2e Antibody detects endogenous levels of Cytokeratin 2e
Immunogen Description	A synthesized peptide derived from human Cytokeratin 2e
Other Names	CK 2e; Cytokeratin-2e; Epithelial keratin-2e; K2e; Keratin type II cytoskeletal 2 epidermal; Keratin-2 epidermis; KRT2; KRT2A; KRT2E; Type-II keratin Kb2;
Accession No.	Uniprot:P35908
Uniprot	P35908
Formulation	Rabbit IgG in phosphate buffered saline , pH 7.4, 150mM NaCl, 0.02% sodium azide and 50% glycerol.
Storage	Store at +4°C short term. Store at -20°C long term. Avoid freeze / thaw cycle.

## Application Details

WB 1:1000~1:2000 IHC 1:50~1:200

## Images



Western blot analysis of Cytokeratin 2e expression in A431 cell lysate.

## Product Description

Probably contributes to terminal cornification. Associated with keratinocyte activation, proliferation and keratinization.

## Background

---

Probably contributes to terminal cornification. Associated with keratinocyte activation, proliferation and keratinization.

---

Note: This product is for in vitro research use only