

GLUT2 Rabbit mAb

Catalog No: #59068

Package Size: #59068-1 50ul #59068-2 100ul

Orders: order@signalwayantibody.com

Support: tech@signalwayantibody.com

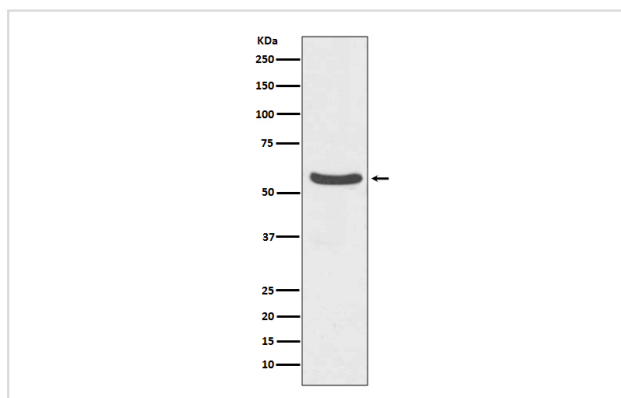
Description

Product Name	GLUT2 Rabbit mAb
Host Species	Rabbit
Clonality	Monoclonal
Isotype	Rabbit IgG
Purification	Affinity-chromatography
Applications	WB
Species Reactivity	Human
Specificity	GLUT2 Antibody detects endogenous levels of GLUT2
Immunogen Description	A synthesized peptide derived from human GLUT2
Other Names	liver; Glucose Transporter 2; Glucose Transporter GLUT2; Glucose transporter type 2; Glucose transporter, liver/islet; GLUT2; GTT2; SLC2A2;
Accession No.	Uniprot:P11168
Uniprot	P11168
Formulation	Rabbit IgG in phosphate buffered saline , pH 7.4, 150mM NaCl, 0.02% sodium azide and 50% glycerol.
Storage	Store at +4°C short term. Store at -20°C long term. Avoid freeze / thaw cycle.

Application Details

WB 1:1000~1:2000

Images



Western blot analysis of GLUT2 expression in HepG2 cell lysate.

Product Description

Glucose is fundamental to the metabolism of mammalian cells. Its passage across cell membranes is mediated by a family of transporters termed glucose transporters or Gluts. Facilitative glucose transporter. This isoform likely mediates the bidirectional transfer of glucose across the plasma membrane of hepatocytes and is responsible for uptake of glucose by the beta cells.

Background

Glucose is fundamental to the metabolism of mammalian cells. Its passage across cell membranes is mediated by a family of transporters termed glucose transporters or Gluts. Facilitative glucose transporter. This isoform likely mediates the bidirectional transfer of glucose across the plasma membrane of hepatocytes and is responsible for uptake of glucose by the beta cells.

Note: This product is for in vitro research use only