

SMC1 Rabbit mAb

Catalog No: #59073

Package Size: #59073-1 50ul #59073-2 100ul

Orders: order@signalwayantibody.com

Support: tech@signalwayantibody.com

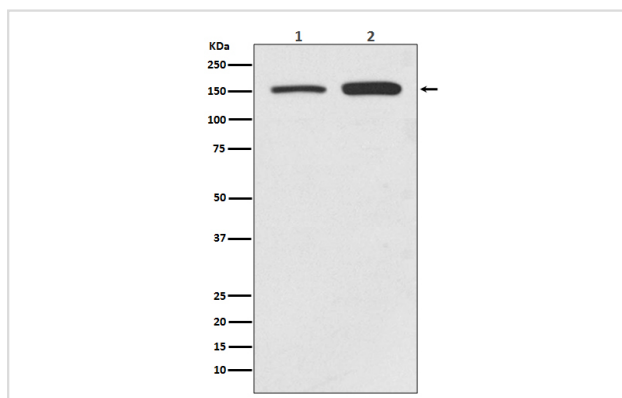
Description

Product Name	SMC1 Rabbit mAb
Host Species	Rabbit
Clonality	Monoclonal
Isotype	Rabbit IgG
Purification	Affinity-chromatography
Applications	WB IHC ICC/IF
Species Reactivity	Human Mouse Rat
Specificity	SMC1 Antibody detects endogenous levels of SMC1
Immunogen Description	A synthesized peptide derived from human SMC1
Other Names	Structural maintenance of chromosomes protein 1A; SMC protein 1A; SMC-1-alpha; SMC-1A; Sb1.8; SMC1A; DXS423E; KIAA0178; SB1.8; SMC1; SMC1L1;
Accession No.	Uniprot:Q14683
Uniprot	Q14683
Formulation	Rabbit IgG in phosphate buffered saline , pH 7.4, 150mM NaCl, 0.02% sodium azide and 50% glycerol.
Storage	Store at +4°C short term. Store at -20°C long term. Avoid freeze / thaw cycle.

Application Details

WB 1:1000~1:2000 IHC 1:50~1:200 ICC/IF 1:50~1:200

Images



Western blot analysis of SMC1 expression in (1) HeLa cell lysate; (2) Jurkat cell lysate.

Product Description

Structural maintenance of chromosomes 1 (SMC1) protein is a chromosomal protein member of the cohesin complex that enables sister chromatid cohesion and plays a role in DNA repair. ATM/NBS1-dependent phosphorylation of SMC1 occurs at Ser957 and Ser966 in response to ionizing radiation (IR) as part of the intra-S-phase DNA damage checkpoint.

Background

Structural maintenance of chromosomes 1 (SMC1) protein is a chromosomal protein member of the cohesin complex that enables sister chromatid cohesion and plays a role in DNA repair. ATM/NBS1-dependent phosphorylation of SMC1 occurs at Ser957 and Ser966 in response to ionizing radiation (IR) as part of the intra-S-phase DNA damage checkpoint.

Note: This product is for in vitro research use only