

SOX1 Rabbit mAb

Catalog No: #59079

Package Size: #59079-1 50ul #59079-2 100ul

Orders: order@signalwayantibody.com

Support: tech@signalwayantibody.com

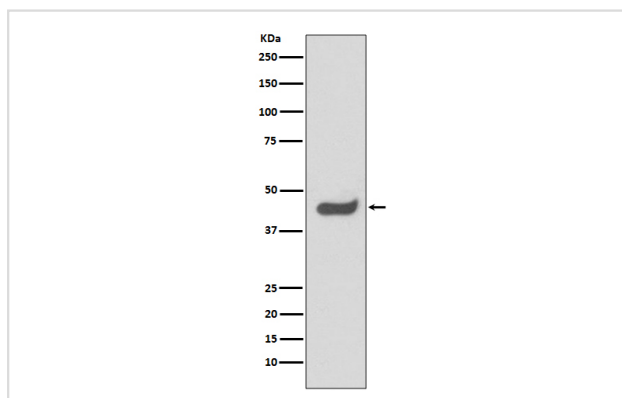
Description

Product Name	SOX1 Rabbit mAb
Host Species	Rabbit
Clonality	Monoclonal
Isotype	Rabbit IgG
Purification	Affinity-chromatography
Applications	WB IHC ICC/IF
Species Reactivity	Human Mouse
Specificity	SOX1 Antibody detects endogenous levels of SOX1
Immunogen Description	A synthesized peptide derived from human SOX1
Other Names	Sex determining region Y box 1; sox1; SRY; SRY box containing gene 1; SRY related HMG box gene 1; Transcription factor Sox-1;
Accession No.	Uniprot:O00570
Uniprot	O00570
Formulation	Rabbit IgG in phosphate buffered saline , pH 7.4, 150mM NaCl, 0.02% sodium azide and 50% glycerol.
Storage	Store at +4°C short term. Store at -20°C long term. Avoid freeze / thaw cycle.

Application Details

WB 1:1000~1:2000 IHC 1:50~1:200 ICC/IF 1:50~1:200

Images



Western blot analysis of SOX1 expression in HeLa cell lysate.

Product Description

Sox (Sry-related box) genes encode a family of transcription factors that play a myriad of roles in developmental processes. Sox1 and Sox2 are the earliest markers that identify neuroectodermal tissue, and these markers, together with Sox9 collectively mark neuronal stem cells (NSC's) that are present in neurogenically active areas of the mature rodent brain. Sox1 is thought to maintain the cell cycle and promote self renewal in NSCs.

Background

Sox (Sry-related box) genes encode a family of transcription factors that play a myriad of roles in developmental processes. Sox1 and Sox2 are the earliest markers that identify neuroectodermal tissue, and these markers, together with Sox9 collectively mark neuronal stem cells (NSC's) that are present in neurogenically active areas of the mature rodent brain. Sox1 is thought to maintain the cell cycle and promote self renewal in NSCs.

Note: This product is for in vitro research use only