

## SOX10 Rabbit mAb

Catalog No: #59080

Package Size: #59080-1 50ul #59080-2 100ul

Orders: order@signalwayantibody.com

Support: tech@signalwayantibody.com

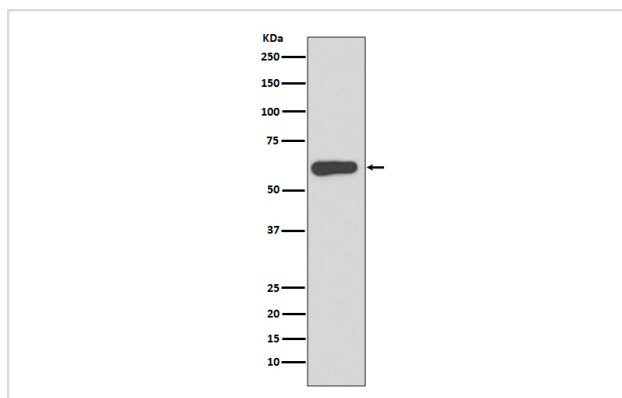
## Description

Product Name	SOX10 Rabbit mAb
Host Species	Rabbit
Clonality	Monoclonal
Isotype	Rabbit IgG
Purification	Affinity-chromatography
Applications	WB ICC/IF FC
Species Reactivity	Human Mouse Rat
Specificity	SOX10 Antibody detects endogenous levels of SOX10
Immunogen Description	A synthesized peptide derived from human SOX10
Other Names	SOX10; DOM; Transcription factor SOX-10; WS4; PCWH; WS2E; SRY-related HMG-box gene 10; WS4C;
Accession No.	Uniprot:P56693
Uniprot	P56693
Formulation	Rabbit IgG in phosphate buffered saline , pH 7.4, 150mM NaCl, 0.02% sodium azide and 50% glycerol.
Storage	Store at +4°C short term. Store at -20°C long term. Avoid freeze / thaw cycle.

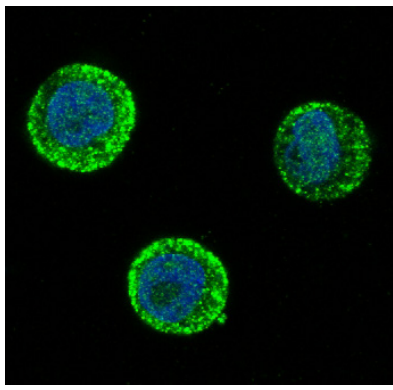
## Application Details

WB 1:1000~1:2000 ICC/IF 1:50~1:200 FC 1:50

## Images



Western blot analysis of SOX10 expression in A375 cell lysate.



Immunofluorescent analysis of HT-29 cells, using SOX10 Antibody.

## Product Description

Sox10 is a member of the SOX (SRY-related HMG-box) family of transcription factors involved in the regulation of embryonic development and the determination of cell fate. Sox10 is an important regulator of neural crest and peripheral nervous system development.

## Background

Sox10 is a member of the SOX (SRY-related HMG-box) family of transcription factors involved in the regulation of embryonic development and the determination of cell fate. Sox10 is an important regulator of neural crest and peripheral nervous system development.

Note: This product is for in vitro research use only