

Cyclin D3 Rabbit mAb

Catalog No: #59082

Package Size: #59082-1 50ul #59082-2 100ul

Orders: order@signalwayantibody.com

Support: tech@signalwayantibody.com

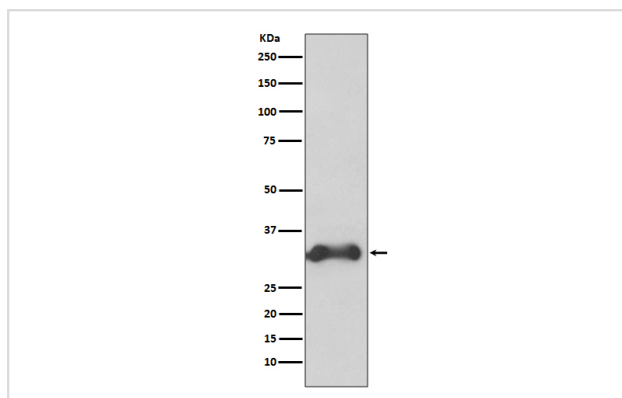
Description

Product Name	Cyclin D3 Rabbit mAb
Host Species	Rabbit
Clonality	Monoclonal
Isotype	Rabbit IgG
Purification	Affinity-chromatography
Applications	WB ICC/IF FC
Species Reactivity	Human Mouse
Specificity	Cyclin D3 Antibody detects endogenous levels of Cyclin D3
Immunogen Description	A synthesized peptide derived from human Cyclin D3
Other Names	CCND 3; Ccnd3; CyclinD3; D3 type cyclin; G1 S specific cyclin D3;
Accession No.	Uniprot:P30281
Uniprot	P30281
Formulation	Rabbit IgG in phosphate buffered saline , pH 7.4, 150mM NaCl, 0.02% sodium azide and 50% glycerol.
Storage	Store at +4°C short term. Store at -20°C long term. Avoid freeze / thaw cycle.

Application Details

WB 1:1000~1:2000 ICC/IF 1:50~1:200 FC 1:30

Images



Western blot analysis of Cyclin D3 expression in K562 cell lysate.

Product Description

Regulatory component of the cyclin D3-CDK4 (DC) complex that phosphorylates and inhibits members of the retinoblastoma (RB) protein family including RB1 and regulates the cell-cycle during G1/S transition.

Background

Regulatory component of the cyclin D3-CDK4 (DC) complex that phosphorylates and inhibits members of the retinoblastoma (RB) protein family including RB1 and regulates the cell-cycle during G1/S transition.

Note: This product is for in vitro research use only