

IRS1 Rabbit mAb

Catalog No: #59084

Package Size: #59084-1 50ul #59084-2 100ul

Orders: order@signalwayantibody.com

Support: tech@signalwayantibody.com

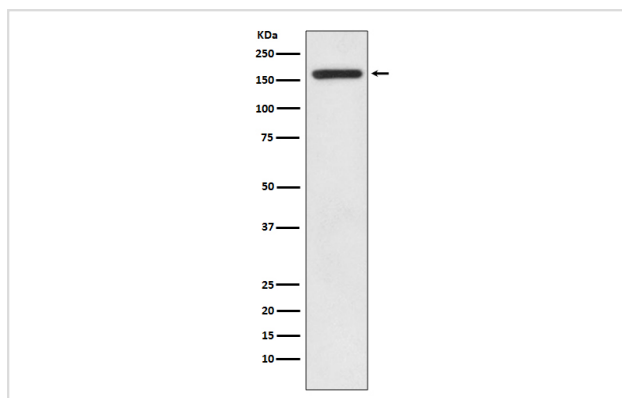
Description

Product Name	IRS1 Rabbit mAb
Host Species	Rabbit
Clonality	Monoclonal
Isotype	Rabbit IgG
Purification	Affinity-chromatography
Applications	WB IHC ICC/IF
Species Reactivity	Human
Specificity	IRS1 Antibody detects endogenous levels of IRS1
Immunogen Description	A synthesized peptide derived from human IRS1
Other Names	HIRS1; Insulin receptor substrate 1; IRS 1; IRS1;
Accession No.	Uniprot:P35568
Uniprot	P35568
Formulation	Rabbit IgG in phosphate buffered saline , pH 7.4, 150mM NaCl, 0.02% sodium azide and 50% glycerol.
Storage	Store at +4°C short term. Store at -20°C long term. Avoid freeze / thaw cycle.

Application Details

WB 1:1000~1:2000 IHC 1:50~1:200 ICC/IF 1:50~1:200

Images



Western blot analysis of IRS1 expression in HEK293 cell lysate.

Product Description

IRS1 is one of the major substrates of the insulin receptor kinase. May mediate the control of various cellular processes by insulin. When phosphorylated by the insulin receptor binds specifically to various cellular proteins containing SH2 domains such as phosphatidylinositol 3-kinase p85 subunit or GRB2.

Background

IRS1 is one of the major substrates of the insulin receptor kinase. May mediate the control of various cellular processes by insulin. When phosphorylated by the insulin receptor binds specifically to various cellular proteins containing SH2 domains such as phosphatidylinositol 3-kinase p85 subunit or GRB2.

Note: This product is for in vitro research use only