

## Cyclin B2 Rabbit mAb

Catalog No: #59085

Package Size: #59085-1 50ul #59085-2 100ul

Orders: order@signalwayantibody.com

Support: tech@signalwayantibody.com

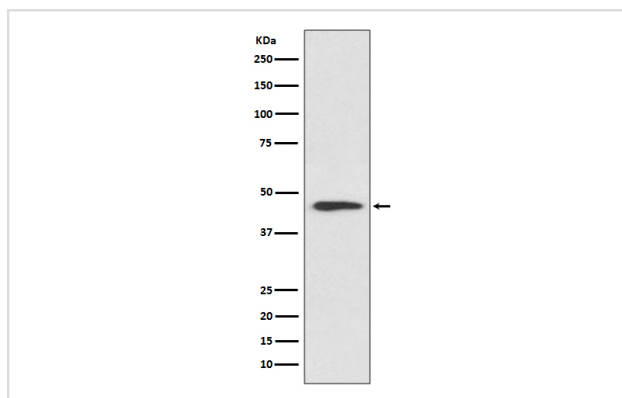
## Description

Product Name	Cyclin B2 Rabbit mAb
Host Species	Rabbit
Clonality	Monoclonal
Isotype	Rabbit IgG
Purification	Affinity-chromatography
Applications	WB IHC ICC/IF IP
Species Reactivity	Human Mouse Rat
Specificity	Cyclin B2 Antibody detects endogenous levels of Cyclin B2
Immunogen Description	A synthesized peptide derived from human Cyclin B2
Other Names	ccnb2; CycB2; Cyclin B2; G2/mitotic specific cyclin B2;
Accession No.	Uniprot:O95067
Uniprot	O95067
Formulation	Rabbit IgG in phosphate buffered saline , pH 7.4, 150mM NaCl, 0.02% sodium azide and 50% glycerol.
Storage	Store at +4°C short term. Store at -20°C long term. Avoid freeze / thaw cycle.

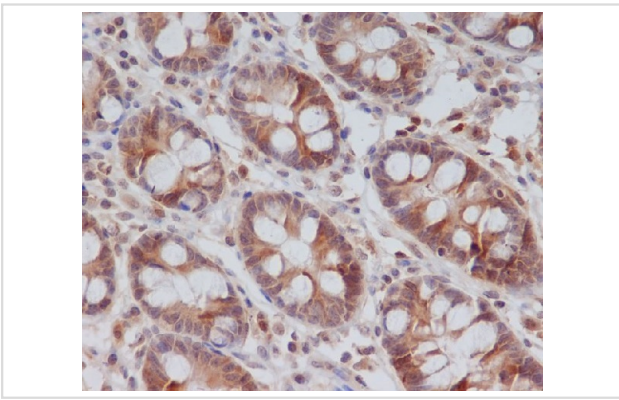
## Application Details

WB 1:500~1:1000 IHC 1:50~1:200 ICC/IF 1:50~1:200 IP 1:50

## Images



Western blot analysis of Cyclin B2 expression in HeLa cell lysate.



Immunohistochemical analysis of paraffin-embedded human colon, using Cyclin B2 Antibody.

## Product Description

Cyclin B2 is a member of the cyclin family, specifically the B-type cyclins. The B-type cyclins, B1 and B2, associate with p34cdc2 and are essential components of the cell cycle regulatory machinery. Essential for the control of the cell cycle at the G2/M (mitosis) transition.

## Background

Cyclin B2 is a member of the cyclin family, specifically the B-type cyclins. The B-type cyclins, B1 and B2, associate with p34cdc2 and are essential components of the cell cycle regulatory machinery. Essential for the control of the cell cycle at the G2/M (mitosis) transition.

Note: This product is for in vitro research use only