

CDK6 Rabbit mAb

Catalog No: #59089

Package Size: #59089-1 50ul #59089-2 100ul

Orders: order@signalwayantibody.com

Support: tech@signalwayantibody.com

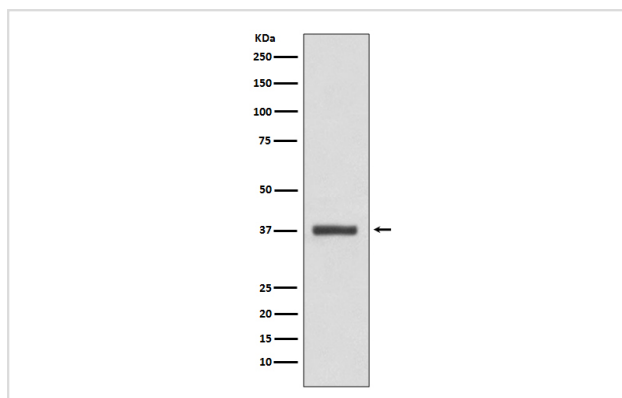
Description

Product Name	CDK6 Rabbit mAb
Host Species	Rabbit
Clonality	Monoclonal
Isotype	Rabbit IgG
Purification	Affinity-chromatography
Applications	WB IHC ICC/IF FC
Species Reactivity	Human
Specificity	CDK6 Antibody detects endogenous levels of CDK6
Immunogen Description	A synthesized peptide derived from human CDK6
Other Names	CDK 6; Cell division protein kinase 6; Crk 2; Cyclin dependent kinase 6; p40; PLSTIRE; STQTL11;
Accession No.	Uniprot:Q00534
Uniprot	Q00534
Formulation	Rabbit IgG in phosphate buffered saline , pH 7.4, 150mM NaCl, 0.02% sodium azide and 50% glycerol.
Storage	Store at +4°C short term. Store at -20°C long term. Avoid freeze / thaw cycle.

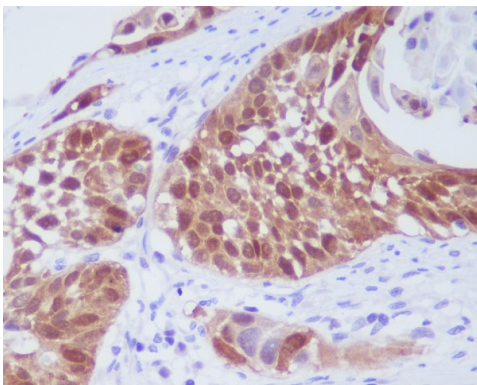
Application Details

WB 1:5000~1:20000 IHC 1:50~1:200 ICC/IF 1:50~1:200 FC 1:100

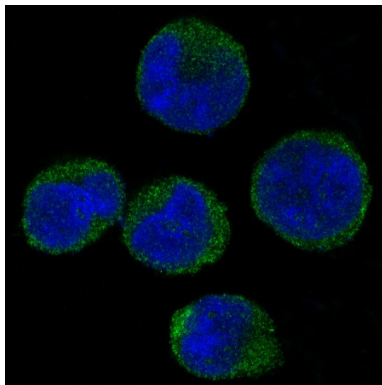
Images



Western blot analysis of CDK6 expression in HeLa cell lysate.



Immunohistochemical analysis of paraffin-embedded human lung cancer, using CDK6 Antibody.



Immunofluorescent analysis of K562 cells, using CDK6 Antibody.

Product Description

The cyclin-dependent kinases form complexes with their cyclin partners and with CDK inhibitors. CDK6 and CDK4 associate with the D-type cyclins and target the retinoblastoma protein, allowing passage through the G1/S phase restriction point.

Background

The cyclin-dependent kinases form complexes with their cyclin partners and with CDK inhibitors. CDK6 and CDK4 associate with the D-type cyclins and target the retinoblastoma protein, allowing passage through the G1/S phase restriction point.

Note: This product is for in vitro research use only