

## Cyclin A2 Rabbit mAb

Catalog No: #59091

Package Size: #59091-1 50ul #59091-2 100ul

Orders: order@signalwayantibody.com

Support: tech@signalwayantibody.com

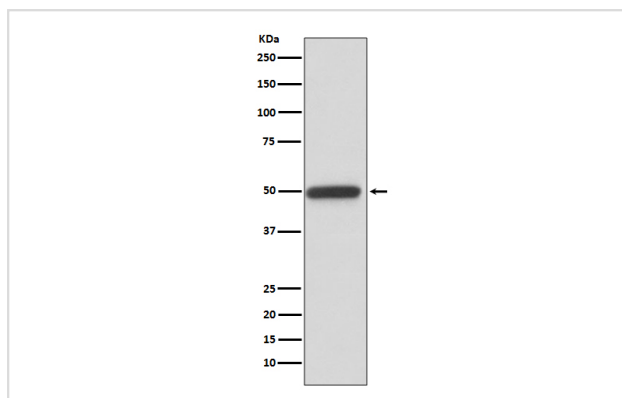
## Description

Product Name	Cyclin A2 Rabbit mAb
Host Species	Rabbit
Clonality	Monoclonal
Isotype	Rabbit IgG
Purification	Affinity-chromatography
Applications	WB IHC ICC/IF
Species Reactivity	Human Mouse Rat
Specificity	Cyclin A2 Antibody detects endogenous levels of Cyclin A2
Immunogen Description	A synthesized peptide derived from human Cyclin A2
Other Names	CCN1; CCNA; Ccna2; Cyclin A2; Cyclin-A;
Accession No.	Uniprot:P20248
Uniprot	P20248
Formulation	Rabbit IgG in phosphate buffered saline , pH 7.4, 150mM NaCl, 0.02% sodium azide and 50% glycerol.
Storage	Store at +4°C short term. Store at -20°C long term. Avoid freeze / thaw cycle.

## Application Details

WB 1:1000~1:2000 IHC 1:50~1:200 ICC/IF 1:50~1:200

## Images



Western blot analysis of Cyclin A2 expression in Jurkat cell lysate.

## Product Description

Cyclin A seems to be required for both S-phase and M-phase. A number of studies have described the ability of over-expressed cyclin A to accelerate the G1 to S transition causing DNA replication, and cyclin A antisense DNA can prevent DNA replication. Cyclin A availability is apparently the rate-limiting step for entry into mitosis, and cyclin A is required for completion of prophase.

## Background

---

Cyclin A seems to be required for both S-phase and M-phase. A number of studies have described the ability of over-expressed cyclin A to accelerate the G1 to S transition causing DNA replication, and cyclin A antisense DNA can prevent DNA replication. Cyclin A availability is apparently the rate-limiting step for entry into mitosis, and cyclin A is required for completion of prophase.

---

Note: This product is for in vitro research use only