

Caspase-6 Rabbit mAb

Catalog No: #59095

Package Size: #59095-1 50ul #59095-2 100ul

Orders: order@signalwayantibody.com

Support: tech@signalwayantibody.com

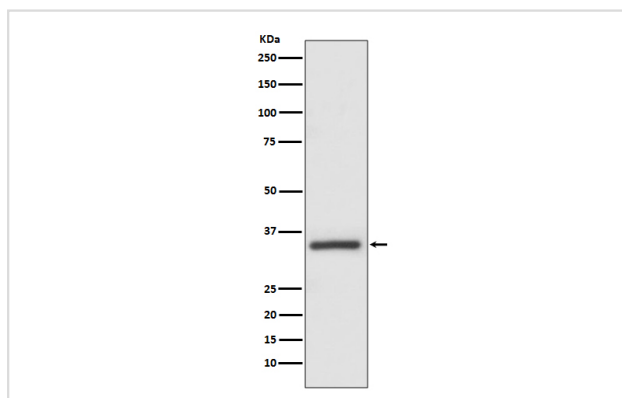
Description

Product Name	Caspase-6 Rabbit mAb
Host Species	Rabbit
Clonality	Monoclonal
Isotype	Rabbit IgG
Purification	Affinity-chromatography
Applications	WB IHC ICC/IF IP FC
Species Reactivity	Human Mouse Rat
Specificity	Caspase-6 Antibody detects endogenous levels of Caspase-6
Immunogen Description	A synthesized peptide derived from human Caspase-6
Other Names	Caspase-6; Caspase6; Caspase 6; CASP-6; poptotic protease Mch-2; Caspase-6 subunit p18; Caspase-6 subunit p11; CASP6; MCH2;
Accession No.	Uniprot:P55212
Uniprot	P55212
Formulation	Rabbit IgG in phosphate buffered saline , pH 7.4, 150mM NaCl, 0.02% sodium azide and 50% glycerol.
Storage	Store at +4°C short term. Store at -20°C long term. Avoid freeze / thaw cycle.

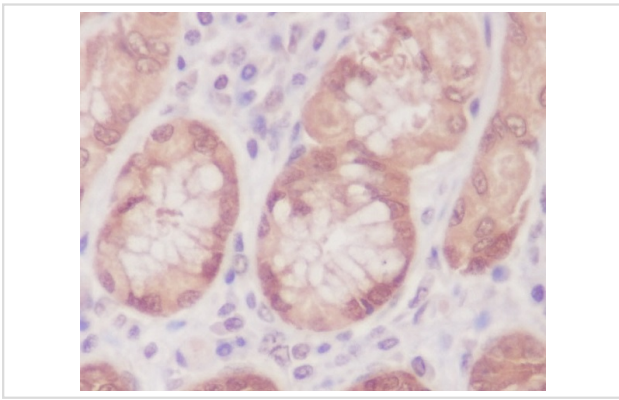
Application Details

WB 1:5000~1:20000 IHC 1:50~1:200 ICC/IF 1:50~1:200 IP 1:50 FC 1:500

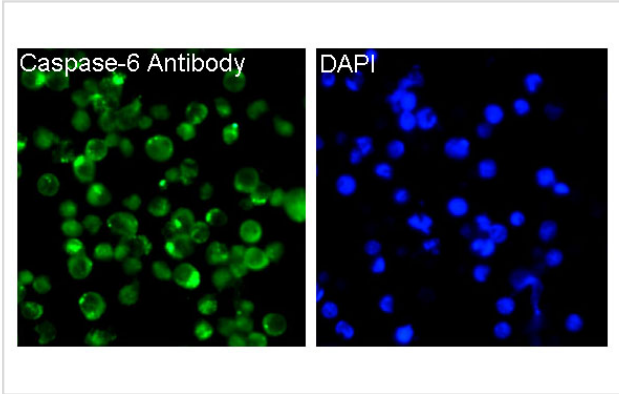
Images



Western blot analysis of Caspase-6 expression in MCF-7 cell lysate.



Immunohistochemical analysis of paraffin-embedded human colon, using Caspase-6 Antibody.



Immunofluorescent analysis of Jurkat cells, using Caspase-6 Antibody.

Product Description

Caspase-6 (Mch2) is one of the major executioner caspases functioning in cellular apoptotic processes. Upon apoptotic stimulation, initiator caspases such as caspase-9 are cleaved and activated. The activated upstream caspases further process downstream executioner caspases, such as caspase-3 and caspase-6, by cleaving them into large and small subunits, thereby initiating a caspase cascade leading to apoptosis.

Background

Caspase-6 (Mch2) is one of the major executioner caspases functioning in cellular apoptotic processes. Upon apoptotic stimulation, initiator caspases such as caspase-9 are cleaved and activated. The activated upstream caspases further process downstream executioner caspases, such as caspase-3 and caspase-6, by cleaving them into large and small subunits, thereby initiating a caspase cascade leading to apoptosis.

Note: This product is for in vitro research use only