

14-3-3 sigma Rabbit mAb

Catalog No: #59102

Package Size: #59102-1 50ul #59102-2 100ul

Orders: order@signalwayantibody.com

Support: tech@signalwayantibody.com

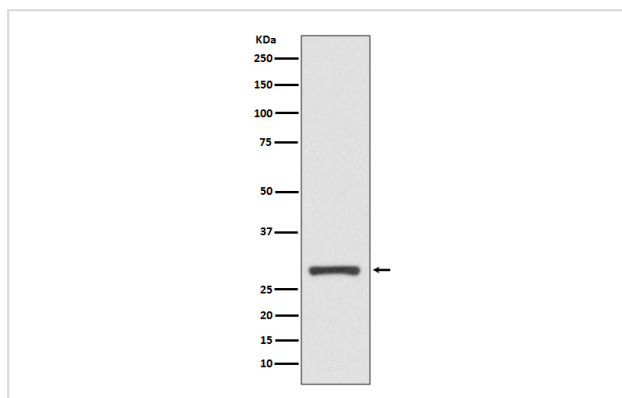
Description

Product Name	14-3-3 sigma Rabbit mAb
Host Species	Rabbit
Clonality	Monoclonal
Isotype	Rabbit IgG
Purification	Affinity-chromatography
Applications	WB IHC
Species Reactivity	Human Rat
Specificity	14-3-3 sigma Antibody detects endogenous levels of 14-3-3 sigma
Immunogen Description	A synthesized peptide derived from human 14-3-3 sigma
Other Names	14 3 3 protein; Epithelial cell marker protein 1; HME 1; Mkrn3; Mme1; SFN protein; Stratifin; YWHAS;
Accession No.	Uniprot:P31947
Uniprot	P31947
Formulation	Rabbit IgG in phosphate buffered saline , pH 7.4, 150mM NaCl, 0.02% sodium azide and 50% glycerol.
Storage	Store at +4°C short term. Store at -20°C long term. Avoid freeze / thaw cycle.

Application Details

WB 1:1000~1:2000 IHC 1:50~1:200

Images



Western blot analysis of 14-3-3 sigma expression in A431 cell lysate.

Product Description

Adapter protein implicated in the regulation of a large spectrum of both general and specialized signaling pathways. Binds to a large number of partners, usually by recognition of a phosphoserine or phosphothreonine motif. Binding generally results in the modulation of the activity of the binding partner. When bound to KRT17, regulates protein synthesis and epithelial cell growth by stimulating Akt/mTOR pathway.

Background

Adapter protein implicated in the regulation of a large spectrum of both general and specialized signaling pathways. Binds to a large number of partners, usually by recognition of a phosphoserine or phosphothreonine motif. Binding generally results in the modulation of the activity of the binding partner. When bound to KRT17, regulates protein synthesis and epithelial cell growth by stimulating Akt/mTOR pathway.

Note: This product is for in vitro research use only