

## STAT1 alpha Rabbit mAb

Catalog No: #59105

Package Size: #59105-1 50ul #59105-2 100ul

Orders: order@signalwayantibody.com

Support: tech@signalwayantibody.com

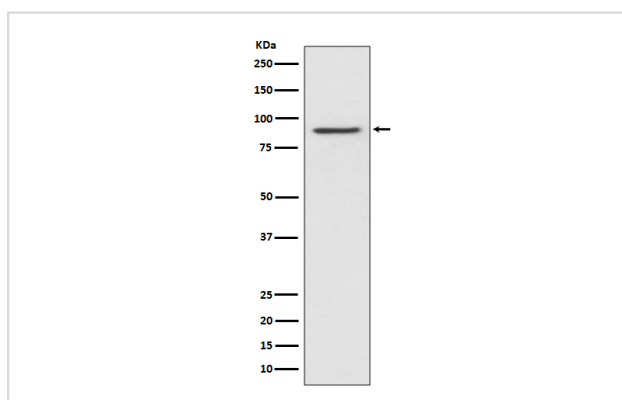
## Description

Product Name	STAT1 alpha Rabbit mAb
Host Species	Rabbit
Clonality	Monoclonal
Isotype	Rabbit IgG
Purification	Affinity-chromatography
Applications	WB IHC ICC/IF IP FC
Species Reactivity	Human
Specificity	STAT1 alpha Antibody detects endogenous levels of STAT1 alpha
Immunogen Description	A synthesized peptide derived from human STAT1 alpha
Other Names	CANDF7; ISGF 3 ; Signal transducer and activator of transcription 1, 91kDa; Signal transducer and activator of transcription 1-alpha/beta; Stat1; STAT91; Transcription factor ISGF-3 components p91/p84;
Accession No.	Uniprot:P42224
Uniprot	P42224
Formulation	Rabbit IgG in phosphate buffered saline , pH 7.4, 150mM NaCl, 0.02% sodium azide and 50% glycerol.
Storage	Store at +4°C short term. Store at -20°C long term. Avoid freeze / thaw cycle.

## Application Details

WB 1:5000~1:20000 IHC 1:50~1:200 ICC/IF 1:50~1:200 IP 1:50 FC 1:500

## Images



Western blot analysis of STAT1 alpha expression in HeLa cell lysate.

## Product Description

The Stat1 transcription factor is activated in response to a large number of ligands and is essential for responsiveness to IFN- $\alpha$  and IFN- $\gamma$ . Phosphorylation of Stat1 at Tyr701 induces Stat1 dimerization, nuclear translocation, and DNA binding. The inappropriate activation of Stat1 occurs in many tumors.

## Background

---

The Stat1 transcription factor is activated in response to a large number of ligands and is essential for responsiveness to IFN- $\alpha$  and IFN- $\gamma$ . Phosphorylation of Stat1 at Tyr701 induces Stat1 dimerization, nuclear translocation, and DNA binding. The inappropriate activation of Stat1 occurs in many tumors.

---

Note: This product is for in vitro research use only