

Smad1 Rabbit mAb

Catalog No: #59115

Package Size: #59115-1 50ul #59115-2 100ul

Orders: order@signalwayantibody.com

Support: tech@signalwayantibody.com

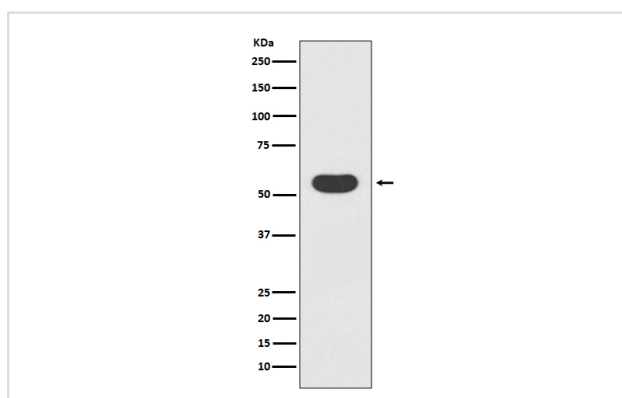
Description

Product Name	Smad1 Rabbit mAb
Host Species	Rabbit
Clonality	Monoclonal
Isotype	Rabbit IgG
Purification	Affinity-chromatography
Applications	WB IHC ICC/IF FC
Species Reactivity	Human
Specificity	Smad1 Antibody detects endogenous levels of Smad1
Immunogen Description	A synthesized peptide derived from human Smad1
Other Names	MAD homolog 1; Mothers against DPP homolog 1; JV4-1; Mad-related protein 1; SMAD family member 1; SMAD 1; Smad1; hSMAD1; BSP-1; SMAD1; BSP1; MADH1; MADR1;
Accession No.	Uniprot:Q15797
Uniprot	Q15797
Formulation	Rabbit IgG in phosphate buffered saline , pH 7.4, 150mM NaCl, 0.02% sodium azide and 50% glycerol.
Storage	Store at +4°C short term. Store at -20°C long term. Avoid freeze / thaw cycle.

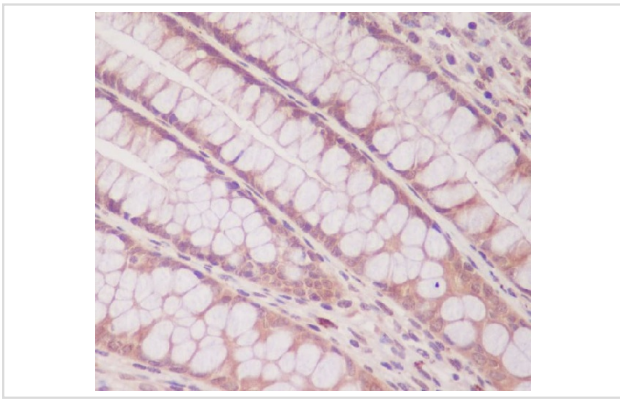
Application Details

WB 1:1000~1:2000 IHC 1:50~1:200 ICC/IF 1:50~1:200 FC 1:50

Images



Western blot analysis of Smad1 expression in 293T cell lysate.



Immunohistochemical analysis of paraffin-embedded human colon, using Smad1 Antibody.

Product Description

Transcriptional modulator activated by BMP (bone morphogenetic proteins) type 1 receptor kinase. SMAD1 is a receptor-regulated SMAD (R-SMAD). SMAD1/OAZ1/PSMB4 complex mediates the degradation of the CREBBP/EP300 repressor SNIP1;

Background

Transcriptional modulator activated by BMP (bone morphogenetic proteins) type 1 receptor kinase. SMAD1 is a receptor-regulated SMAD (R-SMAD). SMAD1/OAZ1/PSMB4 complex mediates the degradation of the CREBBP/EP300 repressor SNIP1;

Note: This product is for in vitro research use only