

PAX2 Rabbit mAb

Catalog No: #59138

Package Size: #59138-1 50ul #59138-2 100ul

Orders: order@signalwayantibody.com

Support: tech@signalwayantibody.com

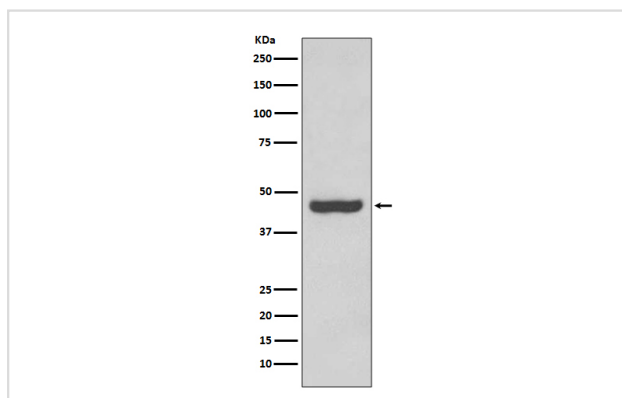
Description

Product Name	PAX2 Rabbit mAb
Host Species	Rabbit
Clonality	Monoclonal
Isotype	Rabbit IgG
Purification	Affinity-chromatography
Applications	WB IHC
Species Reactivity	Human
Specificity	PAX2 Antibody detects endogenous levels of PAX2
Immunogen Description	A synthesized peptide derived from human PAX2
Other Names	Paired box 2; Paired box gene 2; paired box homeotic gene 2; paired box protein 2; Paired box protein Pax 2; Pax 2;
Accession No.	Uniprot:Q02962
Uniprot	Q02962
Formulation	Rabbit IgG in phosphate buffered saline , pH 7.4, 150mM NaCl, 0.02% sodium azide and 50% glycerol.
Storage	Store at +4°C short term. Store at -20°C long term. Avoid freeze / thaw cycle.

Application Details

WB 1:1000~1:2000 IHC 1:50~1:200

Images



Western blot analysis of PAX2 expression in Human fetal kidney lysate.

Product Description

PAX2 is a transcription factor critically required during the development of the nervous and excretory systems, including the midbrain, hindbrain, spinal cord, eye, ear and urogenital tract. Probable transcription factor that may have a role in kidney cell differentiation. Has a critical role in the development of the urogenital tract, the eyes, and the CNS.

Background

PAX2 is a transcription factor critically required during the development of the nervous and excretory systems, including the midbrain, hindbrain, spinal cord, eye, ear and urogenital tract. Probable transcription factor that may have a role in kidney cell differentiation. Has a critical role in the development of the urogenital tract, the eyes, and the CNS.

Note: This product is for in vitro research use only