

## 14-3-3 alpha + beta Rabbit mAb

Catalog No: #59146

Package Size: #59146-1 50ul #59146-2 100ul

Orders: order@signalwayantibody.com

Support: tech@signalwayantibody.com

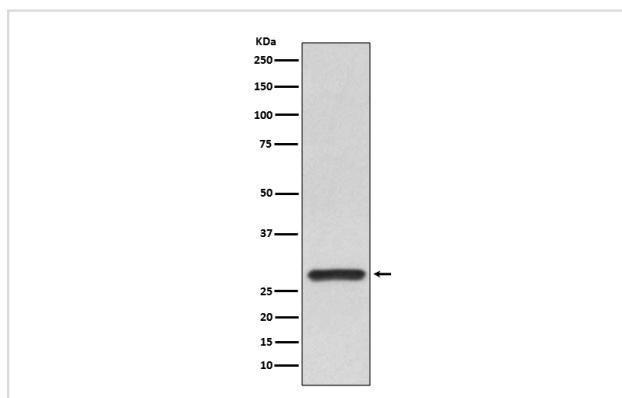
## Description

Product Name	14-3-3 alpha + beta Rabbit mAb
Host Species	Rabbit
Clonality	Monoclonal
Isotype	Rabbit IgG
Purification	Affinity-chromatography
Applications	WB IHC ICC/IF IP FC
Species Reactivity	Human Mouse Rat
Specificity	14-3-3 alpha + beta Antibody detects endogenous levels of 14-3-3 alpha + beta
Immunogen Description	A synthesized peptide derived from human 14-3-3 alpha + beta
Other Names	14 3 3 protein beta/alpha; Brain protein 14 3 3 beta isoform; GW128; HS 1; KCIP-1; KCIP1; Protein 1054; Protein kinase C inhibitor protein 1; YWHAA; YWHAB;
Accession No.	Uniprot:P31946
Uniprot	P31946
Formulation	Rabbit IgG in phosphate buffered saline , pH 7.4, 150mM NaCl, 0.02% sodium azide and 50% glycerol.
Storage	Store at +4°C short term. Store at -20°C long term. Avoid freeze / thaw cycle.

## Application Details

WB 1:500~1:1000 IHC 1:50~1:200 ICC/IF 1:50~1:200 IP 1:30 FC 1:30

## Images



Western blot analysis of 14-3-3 alpha + beta expression in HeLa lysate.

## Product Description

Adapter protein implicated in the regulation of a large spectrum of both general and specialized signaling pathways. Binds to a large number of partners, usually by recognition of a phosphoserine or phosphothreonine motif. Binding generally results in the modulation of the activity of the binding partner. Negative regulator of osteogenesis.

## Background

---

Adapter protein implicated in the regulation of a large spectrum of both general and specialized signaling pathways. Binds to a large number of partners, usually by recognition of a phosphoserine or phosphothreonine motif. Binding generally results in the modulation of the activity of the binding partner. Negative regulator of osteogenesis.

---

Note: This product is for in vitro research use only