

14-3-3 epsilon Rabbit mAb

Catalog No: #59148

Package Size: #59148-1 50ul #59148-2 100ul

Orders: order@signalwayantibody.com

Support: tech@signalwayantibody.com

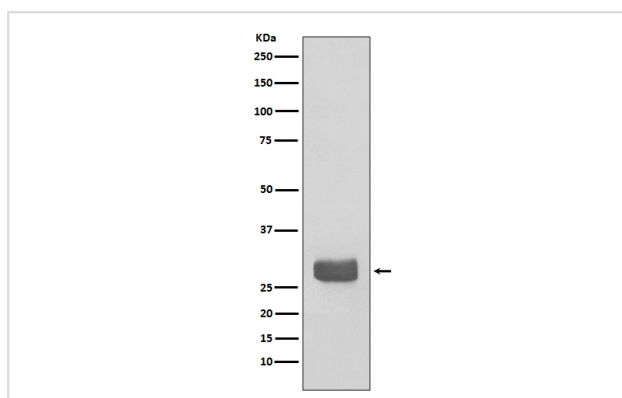
Description

Product Name	14-3-3 epsilon Rabbit mAb
Host Species	Rabbit
Clonality	Monoclonal
Isotype	Rabbit IgG
Purification	Affinity-chromatography
Applications	WB IHC ICC/IF FC
Species Reactivity	Human Mouse Rat
Specificity	14-3-3 epsilon Antibody detects endogenous levels of 14-3-3 epsilon
Immunogen Description	A synthesized peptide derived from human 14-3-3 epsilon
Other Names	14-3-3E; 143E; KCIP-1; MDCR; Protein kinase C inhibitor protein-1; YWHAE;
Accession No.	Uniprot:P62258
Uniprot	P62258
Formulation	Rabbit IgG in phosphate buffered saline , pH 7.4, 150mM NaCl, 0.02% sodium azide and 50% glycerol.
Storage	Store at +4°C short term. Store at -20°C long term. Avoid freeze / thaw cycle.

Application Details

WB 1:1000~1:2000 IHC 1:50~1:200 ICC/IF 1:50~1:200 FC 1:50

Images



Western blot analysis of 14-3-3 epsilon expression in 293T cell lysate.

Product Description

Adapter protein implicated in the regulation of a large spectrum of both general and specialized signaling pathway. Binds to a large number of partners, usually by recognition of a phosphoserine or phosphothreonine motif. Binding generally results in the modulation of the activity of the binding partner.

Background

Adapter protein implicated in the regulation of a large spectrum of both general and specialized signaling pathway. Binds to a large number of partners, usually by recognition of a phosphoserine or phosphothreonine motif. Binding generally results in the modulation of the activity of the binding partner.

Note: This product is for in vitro research use only