

## 14-3-3 Theta Rabbit mAb

Catalog No: #59150

Package Size: #59150-1 50ul #59150-2 100ul

Orders: order@signalwayantibody.com

Support: tech@signalwayantibody.com

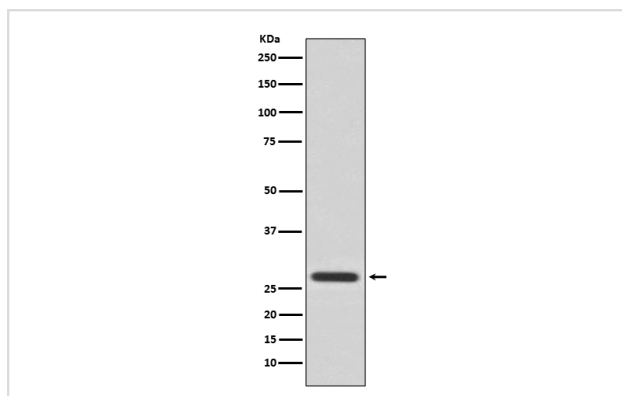
## Description

Product Name	14-3-3 Theta Rabbit mAb
Host Species	Rabbit
Clonality	Monoclonal
Isotype	Rabbit IgG
Purification	Affinity-chromatography
Applications	WB ICC/IF FC
Species Reactivity	Human Mouse Rat
Specificity	14-3-3 Theta Antibody detects endogenous levels of 14-3-3 Theta
Immunogen Description	A synthesized peptide derived from human 14-3-3 Theta
Other Names	14-3-3 protein T cell; 14-3-3 protein tau; 14-3-3 protein theta; IC5; Protein HS1;
Accession No.	Uniprot:P27348
Uniprot	P27348
Formulation	Rabbit IgG in phosphate buffered saline , pH 7.4, 150mM NaCl, 0.02% sodium azide and 50% glycerol.
Storage	Store at +4°C short term. Store at -20°C long term. Avoid freeze / thaw cycle.

## Application Details

WB 1:5000~1:20000 ICC/IF 1:50~1:200 FC 1:200

## Images



Western blot analysis of 14-3-3 Theta expression in HeLa cell lysate.

## Product Description

Adapter protein implicated in the regulation of a large spectrum of both general and specialized signaling pathways. Binds to a large number of partners, usually by recognition of a phosphoserine or phosphothreonine motif. Binding generally results in the modulation of the activity of the binding partner.

## Background

---

Adapter protein implicated in the regulation of a large spectrum of both general and specialized signaling pathways. Binds to a large number of partners, usually by recognition of a phosphoserine or phosphothreonine motif. Binding generally results in the modulation of the activity of the binding partner.

---

Note: This product is for in vitro research use only