

CDC42EP1 Rabbit mAb

Catalog No: #59164

Package Size: #59164-1 50ul #59164-2 100ul

Orders: order@signalwayantibody.com

Support: tech@signalwayantibody.com

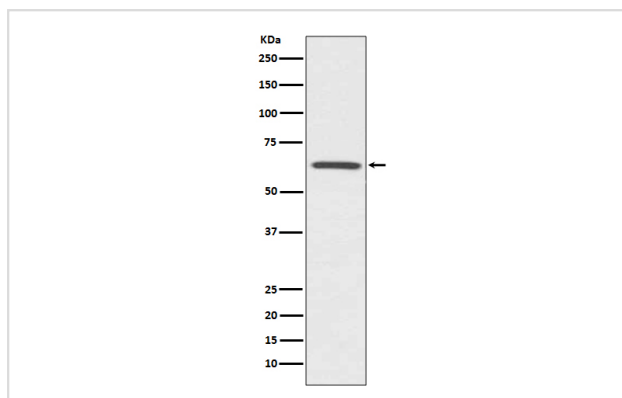
Description

Product Name	CDC42EP1 Rabbit mAb
Host Species	Rabbit
Clonality	Monoclonal
Isotype	Rabbit IgG
Purification	Affinity-chromatography
Applications	WB
Species Reactivity	Human
Specificity	CDC42EP1 Antibody detects endogenous levels of total CDC42EP1
Immunogen Description	A synthesized peptide derived from human CDC42EP1
Other Names	CDC42EP1; CEP1; MSE55; BORG5;
Accession No.	Uniprot:Q00587
Uniprot	Q00587
Formulation	Rabbit IgG in phosphate buffered saline , pH 7.4, 150mM NaCl, 0.02% sodium azide and 50% glycerol.
Storage	Store at +4°C short term. Store at -20°C long term. Avoid freeze / thaw cycle.

Application Details

WB 1:500~1:2000

Images



Western blot analysis of CDC42EP1 expression in HUVEC cell lysate.

Product Description

Probably involved in the organization of the actin cytoskeleton. Induced membrane extensions in fibroblasts.

Background

Probably involved in the organization of the actin cytoskeleton. Induced membrane extensions in fibroblasts.

Note: This product is for in vitro research use only