

A-RAF Rabbit mAb

Catalog No: #59175

Package Size: #59175-1 50ul #59175-2 100ul

Orders: order@signalwayantibody.com

Support: tech@signalwayantibody.com

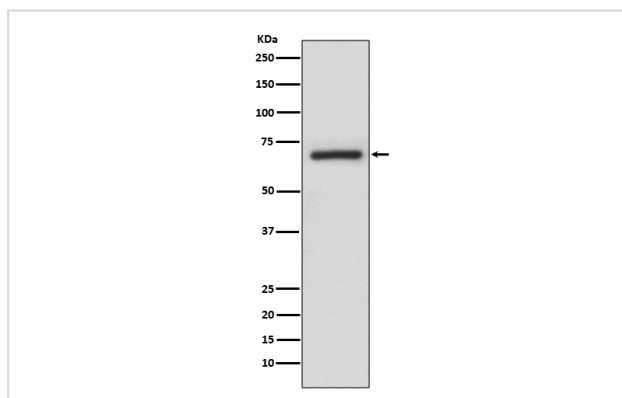
Description

Product Name	A-RAF Rabbit mAb
Host Species	Rabbit
Clonality	Monoclonal
Isotype	Rabbit IgG
Purification	Affinity-chromatography
Applications	WB IHC ICC/IF FC
Species Reactivity	Human
Specificity	A-RAF Antibody detects endogenous levels of total A-RAF
Immunogen Description	A synthesized peptide derived from human A-RAF
Other Names	ARAF; A-raf-1; PKS2; Proto-oncogene A-Raf; Proto-oncogene A-Raf-1; Ras-binding protein DA-Raf; Oncogene ARAF1; ARAF1; RAFA1;
Accession No.	Uniprot:P10398
Uniprot	P10398
Formulation	Rabbit IgG in phosphate buffered saline , pH 7.4, 150mM NaCl, 0.02% sodium azide and 50% glycerol.
Storage	Store at +4°C short term. Store at -20°C long term. Avoid freeze / thaw cycle.

Application Details

WB 1:500~1:2000 IHC 1:50~1:200 ICC/IF 1:50~1:200 FC 1:50

Images



Western blot analysis of A-RAF expression in A375 cell lysate.

Product Description

Involved in the transduction of mitogenic signals from the cell membrane to the nucleus. May also regulate the TOR signaling cascade.

Background

Involved in the transduction of mitogenic signals from the cell membrane to the nucleus. May also regulate the TOR signaling cascade.

Note: This product is for in vitro research use only