

PAX8 Rabbit mAb

Catalog No: #59183

Package Size: #59183-1 50ul #59183-2 100ul

Orders: order@signalwayantibody.com

Support: tech@signalwayantibody.com

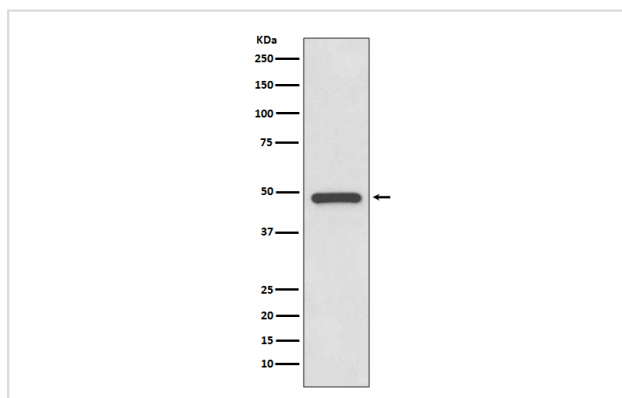
Description

Product Name	PAX8 Rabbit mAb
Host Species	Rabbit
Clonality	Monoclonal
Isotype	Rabbit IgG
Purification	Affinity-chromatography
Applications	WB IHC ICC/IF
Species Reactivity	Human
Specificity	PAX8 Antibody detects endogenous levels of total PAX8
Immunogen Description	A synthesized peptide derived from human PAX8
Other Names	Paired box 8; Paired box gene 8; paired box homeotic gene 8; Paired box protein Pax 8; Paired domain gene 8; PAX8;
Accession No.	Uniprot:Q06710
Uniprot	Q06710
Formulation	Rabbit IgG in phosphate buffered saline , pH 7.4, 150mM NaCl, 0.02% sodium azide and 50% glycerol.
Storage	Store at +4°C short term. Store at -20°C long term. Avoid freeze / thaw cycle.

Application Details

WB 1:500~1:2000 IHC 1:50~1:200 ICC/IF 1:50~1:200

Images



Western blot analysis of PAX8 expression in SK-OV-3 cell lysate.

Product Description

Transcription factor for the thyroid-specific expression of the genes exclusively expressed in the thyroid cell type, maintaining the functional differentiation of such cells.

Background

Transcription factor for the thyroid-specific expression of the genes exclusively expressed in the thyroid cell type, maintaining the functional differentiation of such cells.

Note: This product is for in vitro research use only