

CD3D Rabbit mAb

Catalog No: #59192

Package Size: #59192-1 50ul #59192-2 100ul

Orders: order@signalwayantibody.com

Support: tech@signalwayantibody.com

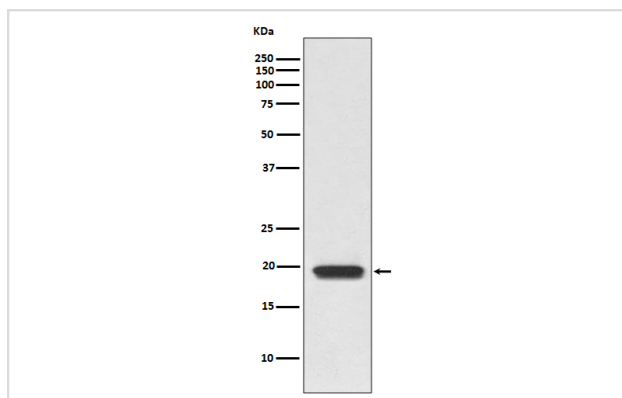
Description

Product Name	CD3D Rabbit mAb
Host Species	Rabbit
Clonality	Monoclonal
Isotype	Rabbit IgG
Purification	Affinity-chromatography
Applications	WB IHC ICC/IF IP FC
Species Reactivity	Human
Specificity	CD3D Antibody detects endogenous levels of total CD3D
Immunogen Description	A synthesized peptide derived from human CD3D
Other Names	CD3D; CD3-DELTA; T3D;
Accession No.	Uniprot:P04234
Uniprot	P04234
Formulation	Rabbit IgG in phosphate buffered saline , pH 7.4, 150mM NaCl, 0.02% sodium azide and 50% glycerol.
Storage	Store at +4°C short term. Store at -20°C long term. Avoid freeze / thaw cycle.

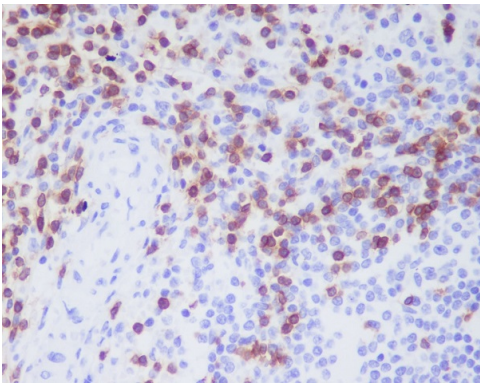
Application Details

WB 1:500~1:2000 IHC 1:50~1:200 ICC/IF 1:50~1:200 IP 1:50 FC 1:50

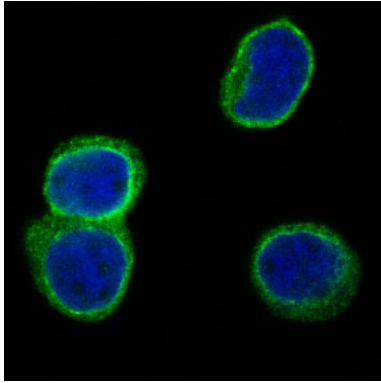
Images



Western blot analysis of CD3D expression in Jurkat cell lysate.



Immunohistochemical analysis of paraffin-embedded human spleen, using CD3D Antibody.



Immunofluorescent analysis of Jurkat cells, using CD3D Antibody.

Product Description

The protein encoded by this gene is part of the T-cell receptor/CD3 complex (TCR/CD3 complex) and is involved in T-cell development and signal transduction. The encoded membrane protein represents the delta subunit of the CD3 complex, and along with four other CD3 subunits, binds either TCR alpha/beta or TCR gamma/delta to form the TCR/CD3 complex on the surface of T-cells.

Background

The protein encoded by this gene is part of the T-cell receptor/CD3 complex (TCR/CD3 complex) and is involved in T-cell development and signal transduction. The encoded membrane protein represents the delta subunit of the CD3 complex, and along with four other CD3 subunits, binds either TCR alpha/beta or TCR gamma/delta to form the TCR/CD3 complex on the surface of T-cells.

Note: This product is for in vitro research use only