

Estrogen Receptor beta Rabbit mAb

Catalog No: #59197

Package Size: #59197-1 50ul #59197-2 100ul

Orders: order@signalwayantibody.com

Support: tech@signalwayantibody.com

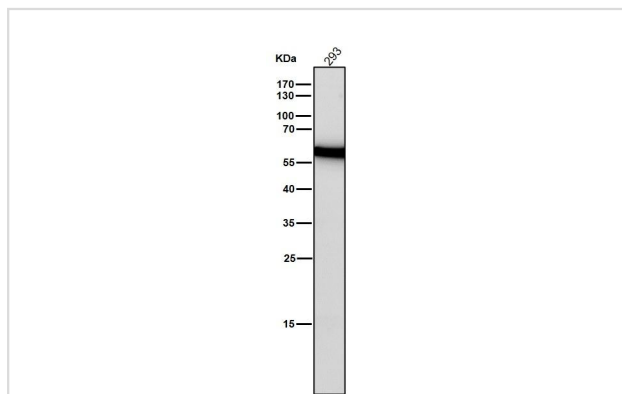
Description

Product Name	Estrogen Receptor beta Rabbit mAb
Host Species	Rabbit
Clonality	Monoclonal
Clone No.	22B11
Isotype	Rabbit IgG
Purification	Affinity-chromatography
Applications	WB IHC
Species Reactivity	Human
Specificity	Estrogen Receptor beta Antibody detects endogenous levels of total Estrogen Receptor beta
Immunogen Description	A synthesized peptide derived from human Estrogen Receptor beta
Target Name	ESR2
Other Names	ESR2; ESTRB; Estrogen receptor beta; NR3A2;
Accession No.	Uniprot:Q92731
Uniprot	Q92731
Formulation	Rabbit IgG in phosphate buffered saline , pH 7.4, 150mM NaCl, 0.02% sodium azide and 50% glycerol.
Storage	Store at +4°C short term. Store at -20°C long term. Avoid freeze / thaw cycle.

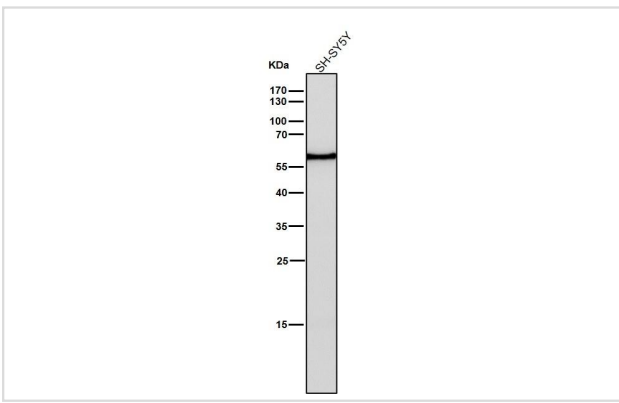
Application Details

WB 1:500~1:2000 IHC 1:50~1:200

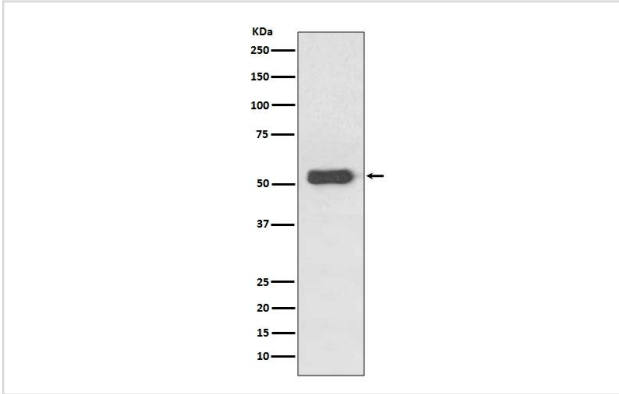
Images



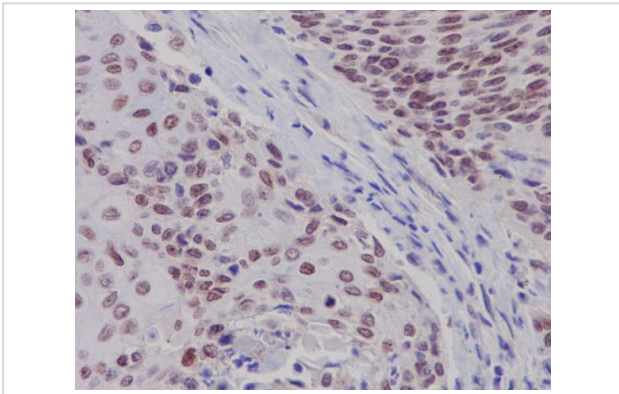
All Lanes: Estrogen Receptor beta Antibody at 1/2000 dilution. Lane 1: 293. Proteins at 20ug per lane. Secondary: Goat Anti-Rabbit IgG(HRP) at 1/20000 dilution. Predicted band size : 59kDa. Observed band size: 59kDa



All Lanes: Estrogen Receptor beta Antibody at 1/2000 dilution. Lane 1: SH-SY5Y. Proteins at 20ug per lane. Secondary: Goat Anti-Rabbit IgG(HRP) at 1/20000 dilution. Predicted band size : 59kDa. Observed band size: 59kDa



All Lanes: Estrogen Receptor beta Antibody at 1/2000 dilution. Lane 1: MCF-7 Cell Lysate. Proteins at 20ug per lane. Secondary: Goat Anti-Rabbit IgG(HRP) at 1/20000 dilution. Predicted band size : 59kDa. Observed band size: 59kDa



Immunohistochemical analysis of paraffin-embedded human cervix cancer, using Estrogen Receptor beta Antibody. Tris-EDTA Buffer (pH 9.0).

Product Description

Nuclear hormone receptor. Binds estrogens with an affinity similar to that of ESR1, and activates expression of reporter genes containing estrogen response elements (ERE) in an estrogen-dependent manner (PubMed:20074560).

Background

Nuclear hormone receptor. Binds estrogens with an affinity similar to that of ESR1, and activates expression of reporter genes containing estrogen response elements (ERE) in an estrogen-dependent manner (PubMed:20074560).

Note: This product is for in vitro research use only