

SDF1 Rabbit mAb

Catalog No: #59205

Package Size: #59205-1 50ul #59205-2 100ul

Orders: order@signalwayantibody.com

Support: tech@signalwayantibody.com

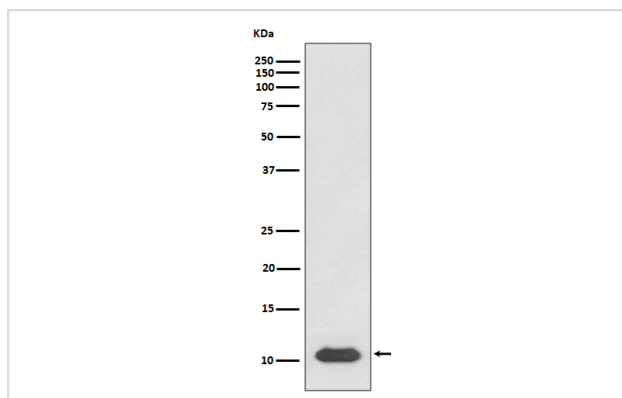
Description

Product Name	SDF1 Rabbit mAb
Host Species	Rabbit
Clonality	Monoclonal
Isotype	Rabbit IgG
Purification	Affinity-chromatography
Applications	WB ICC/IF
Species Reactivity	Human
Specificity	SDF1 Antibody detects endogenous levels of total SDF1
Immunogen Description	A synthesized peptide derived from human SDF1
Other Names	Stromal cell-derived factor 1; SDF-1; hSDF-1; IRH; hIRH; PBSF; CXCL12; SDF1; SDF1A; SDF1B;
Accession No.	Uniprot:P48061
Uniprot	P48061
Formulation	Rabbit IgG in phosphate buffered saline , pH 7.4, 150mM NaCl, 0.02% sodium azide and 50% glycerol.
Storage	Store at +4°C short term. Store at -20°C long term. Avoid freeze / thaw cycle.

Application Details

WB 1:1000~1:5000 ICC/IF 1:50~1:200

Images



Western blot analysis of SDF1 expression in Jurkat cell lysate.

Product Description

Chemoattractant active on T-lymphocytes, monocytes, but not neutrophils. Activates the C-X-C chemokine receptor CXCR4 to induce a rapid and transient rise in the level of intracellular calcium ions and chemotaxis. Also binds to atypical chemokine receptor ACKR3, which activates the beta-arrestin pathway and acts as a scavenger receptor for SDF-1.

Background

Chemoattractant active on T-lymphocytes, monocytes, but not neutrophils. Activates the C-X-C chemokine receptor CXCR4 to induce a rapid and transient rise in the level of intracellular calcium ions and chemotaxis. Also binds to atypical chemokine receptor ACKR3, which activates the beta-arrestin pathway and acts as a scavenger receptor for SDF-1.

Note: This product is for in vitro research use only