

IGF2 Rabbit mAb

Catalog No: #59209

Package Size: #59209-1 50ul #59209-2 100ul

Orders: order@signalwayantibody.com

Support: tech@signalwayantibody.com

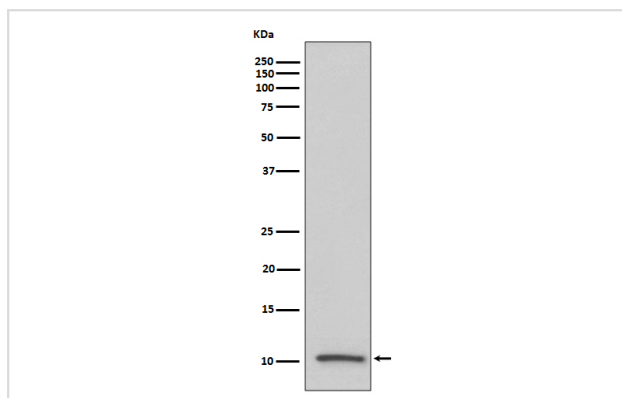
Description

Product Name	IGF2 Rabbit mAb
Host Species	Rabbit
Clonality	Monoclonal
Isotype	Rabbit IgG
Purification	Affinity-chromatography
Applications	WB ICC/IF
Species Reactivity	Human
Specificity	IGF2 Antibody detects endogenous levels of total IGF2
Immunogen Description	A synthesized peptide derived from human IGF2
Other Names	C11orf43; IGF 2; IGF II; IGF2; INSIGF; Somatomedin A;
Accession No.	Uniprot:P01344
Uniprot	P01344
Formulation	Rabbit IgG in phosphate buffered saline , pH 7.4, 150mM NaCl, 0.02% sodium azide and 50% glycerol.
Storage	Store at +4°C short term. Store at -20°C long term. Avoid freeze / thaw cycle.

Application Details

WB 1:500~1:2000 ICC/IF 1:50~1:100

Images



Western blot analysis of IGF2 expression in human serum lysate.

Product Description

The insulin-like growth factors possess growth-promoting activity. In vitro, they are potent mitogens for cultured cells. IGF-II is influenced by placental lactogen and may play a role in fetal development.;Preptin undergoes glucose-mediated co-secretion with insulin, and acts as physiological amplifier of glucose-mediated insulin secretion.

Background

The insulin-like growth factors possess growth-promoting activity. In vitro, they are potent mitogens for cultured cells. IGF-II is influenced by placental lactogen and may play a role in fetal development.;Preptin undergoes glucose-mediated co-secretion with insulin, and acts as physiological amplifier of glucose-mediated insulin secretion.

Note: This product is for in vitro research use only