

GPX1 Rabbit mAb

Catalog No: #59214

Package Size: #59214-1 50ul #59214-2 100ul

Orders: order@signalwayantibody.com

Support: tech@signalwayantibody.com

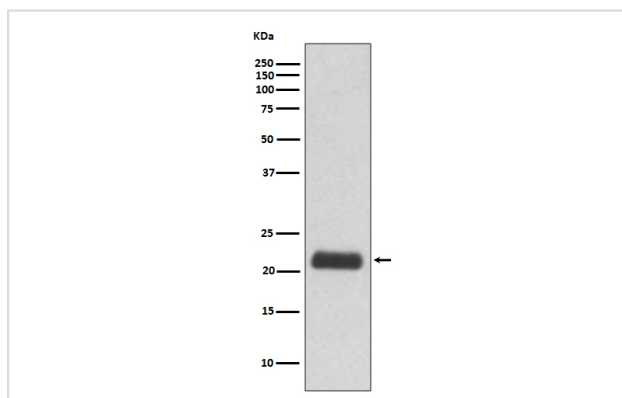
Description

Product Name	GPX1 Rabbit mAb
Host Species	Rabbit
Clonality	Monoclonal
Isotype	Rabbit IgG
Purification	Affinity-chromatography
Applications	WB IP
Species Reactivity	Human Mouse Rat
Specificity	GPX1 Antibody detects endogenous levels of total GPX1
Immunogen Description	A synthesized peptide derived from human GPX1
Other Names	GPX1; GSHPX1; MGC14399; MGC88245 ; Glutathione Peroxidase 1;
Accession No.	Uniprot:P07203
Uniprot	P07203
Calculated MW	22kDa
Formulation	Rabbit IgG in phosphate buffered saline , pH 7.4, 150mM NaCl, 0.02% sodium azide and 50% glycerol.
Storage	Store at +4°C short term. Store at -20°C long term. Avoid freeze / thaw cycle.

Application Details

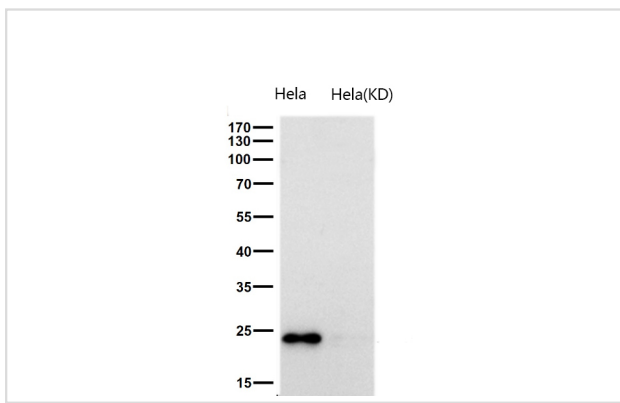
WB 1:500~1:2000 IP 1:50

Images



Western blot analysis of GPX1 expression in 293T cell lysate.

All lanes use the Antibody at 1:1K dilution for 1 hour at room temperature.



Product Description

Glutathione peroxidase 1 (GPX1) is a cytosolic selenoprotein which reduces hydrogen peroxide to water. GPX1 is the most abundant and ubiquitous among the five GPX isoforms identified so far. It is an important component in the anti-oxidative defense in cells and is associated with a variety of disease conditions, such as colon cancer, coronary artery disease and insulin resistance.

Background

Glutathione peroxidase 1 (GPX1) is a cytosolic selenoprotein which reduces hydrogen peroxide to water. GPX1 is the most abundant and ubiquitous among the five GPX isoforms identified so far. It is an important component in the anti-oxidative defense in cells and is associated with a variety of disease conditions, such as colon cancer, coronary artery disease and insulin resistance.

Note: This product is for in vitro research use only