

## FUS / TLS Rabbit mAb

Catalog No: #59217

Package Size: #59217-1 50ul #59217-2 100ul

Orders: order@signalwayantibody.com

Support: tech@signalwayantibody.com

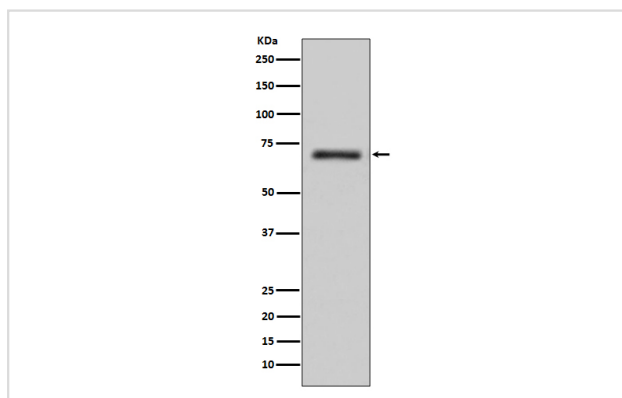
## Description

Product Name	FUS / TLS Rabbit mAb
Host Species	Rabbit
Clonality	Monoclonal
Isotype	Rabbit IgG
Purification	Affinity-chromatography
Applications	WB IHC ICC/IF FC
Species Reactivity	Human Mouse Rat
Specificity	FUS / TLS Antibody detects endogenous levels of total FUS / TLS
Immunogen Description	A synthesized peptide derived from human FUS / TLS
Other Names	FUS; ALS6; CHOP; FUS-CHOP; FUS1; Fused in sarcoma; HnRNPP2; Oncogene TLS; ETM4; Fus-like protein; Oncogene FUS; POMP75;
Accession No.	Uniprot:P35637
Uniprot	P35637
Formulation	Rabbit IgG in phosphate buffered saline , pH 7.4, 150mM NaCl, 0.02% sodium azide and 50% glycerol.
Storage	Store at +4°C short term. Store at -20°C long term. Avoid freeze / thaw cycle.

## Application Details

WB 1:500~1:2000 IHC 1:50~1:200 ICC/IF 1:50~1:200 FC 1:50

## Images



Western blot analysis of FUS / TLS expression in K562 cell lysate.

## Product Description

FUS/TLS (fused in sarcoma/translocated in liposarcoma) was initially identified by investigators as a component of fusion proteins found in a variety of cancers such as myxoid liposarcoma, acute myeloid leukemia, and Ewing's tumor.

## Background

---

FUS/TLS (fused in sarcoma/translocated in liposarcoma) was initially identified by investigators as a component of fusion proteins found in a variety of cancers such as myxoid liposarcoma, acute myeloid leukemia, and Ewing's tumor.

---

Note: This product is for in vitro research use only