

## VWF Rabbit mAb

Catalog No: #59220

Package Size: #59220-1 50ul #59220-2 100ul

Orders: order@signalwayantibody.com

Support: tech@signalwayantibody.com

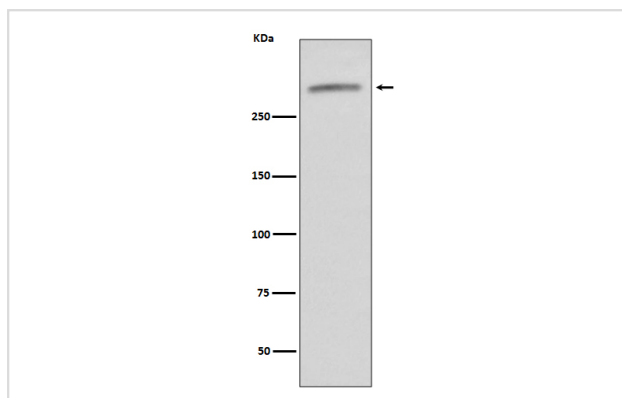
## Description

Product Name	VWF Rabbit mAb
Host Species	Rabbit
Clonality	Monoclonal
Isotype	Rabbit IgG
Purification	Affinity-chromatography
Applications	WB IHC
Species Reactivity	Human
Specificity	VWF Antibody detects endogenous levels of total VWF
Immunogen Description	A synthesized peptide derived from human VWF
Other Names	VWF; von Willebrand factor; von Willebrand antigen II; F8VWF;
Accession No.	Uniprot:P04275
Uniprot	P04275
Formulation	Rabbit IgG in phosphate buffered saline , pH 7.4, 150mM NaCl, 0.02% sodium azide and 50% glycerol.
Storage	Store at +4°C short term. Store at -20°C long term. Avoid freeze / thaw cycle.

## Application Details

WB 1:500~1:2000 IHC 1:50~1:200

## Images



Western blot analysis of VWF expression in human serum lysate.

## Product Description

VWF is important in hemostasis, and genetic defects in the structure and modification of VWF can cause von Willebrand disease (VWD), the most common congenital bleeding disorder in humans.

## Background

---

VWF is important in hemostasis, and genetic defects in the structure and modification of VWF can cause von Willebrand disease (VWD), the most common congenital bleeding disorder in humans.

---

Note: This product is for in vitro research use only