

Myelin Basic Protein Rabbit mAb

Catalog No: #59226

Package Size: #59226-1 50ul #59226-2 100ul

Orders: order@signalwayantibody.com

Support: tech@signalwayantibody.com

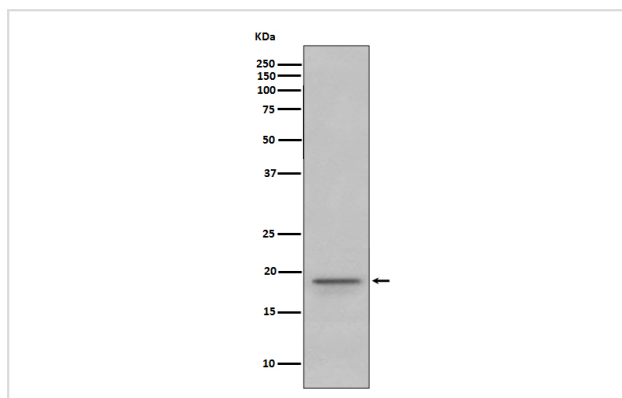
Description

Product Name	Myelin Basic Protein Rabbit mAb
Host Species	Rabbit
Clonality	Monoclonal
Isotype	Rabbit IgG
Purification	Affinity-chromatography
Applications	WB IHC
Species Reactivity	Human
Specificity	Myelin Basic Protein Antibody detects endogenous levels of total Myelin Basic Protein
Immunogen Description	A synthesized peptide derived from human Myelin Basic Protein
Other Names	MGC99675; MBP; Myelin basic protein; HUGO; MLD; GDB;
Accession No.	Uniprot:P02686
Uniprot	P02686
Formulation	Rabbit IgG in phosphate buffered saline , pH 7.4, 150mM NaCl, 0.02% sodium azide and 50% glycerol.
Storage	Store at +4°C short term. Store at -20°C long term. Avoid freeze / thaw cycle.

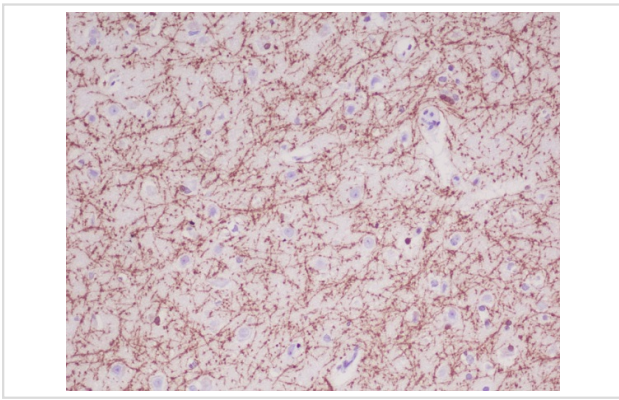
Application Details

WB 1:500~1:2000 IHC 1:50~1:200

Images



Western blot analysis of Myelin Basic Protein expression in Human fetal brain lysate.



Immunohistochemical analysis of paraffin-embedded human brain, using Myelin Basic Protein Antibody.

Product Description

MBP belongs to the myelin basic protein family. The classic group of MBP isoforms (isoform 4-isoform 14) are the most abundant protein components of the myelin membrane in the CNS. They have a role in both its formation and stabilization. The smaller isoforms might have an important role in remyelination of denuded axons in multiple sclerosis.

Background

MBP belongs to the myelin basic protein family. The classic group of MBP isoforms (isoform 4-isoform 14) are the most abundant protein components of the myelin membrane in the CNS. They have a role in both its formation and stabilization. The smaller isoforms might have an important role in remyelination of denuded axons in multiple sclerosis.

Note: This product is for in vitro research use only