

IKK beta Rabbit mAb

Catalog No: #59232

Package Size: #59232-1 50ul #59232-2 100ul

Orders: order@signalwayantibody.com

Support: tech@signalwayantibody.com

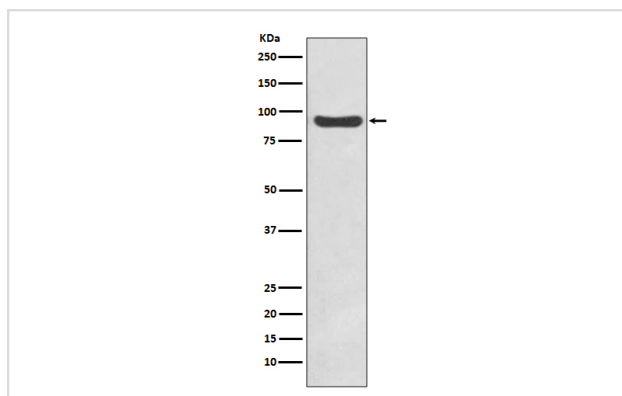
Description

Product Name	IKK beta Rabbit mAb
Host Species	Rabbit
Clonality	Monoclonal
Isotype	Rabbit IgG
Purification	Affinity-chromatography
Applications	WB IHC ICC/IF
Species Reactivity	Human Mouse Rat
Specificity	IKK beta Antibody detects endogenous levels of total IKK beta
Immunogen Description	A synthesized peptide derived from human IKK beta
Other Names	IKK-B; IKK-beta; IKK2; IKKB; IkbKB; NFKB1KB; kinase IKK-beta;
Accession No.	Uniprot:O14920
Uniprot	O14920
Formulation	Rabbit IgG in phosphate buffered saline , pH 7.4, 150mM NaCl, 0.02% sodium azide and 50% glycerol.
Storage	Store at +4°C short term. Store at -20°C long term. Avoid freeze / thaw cycle.

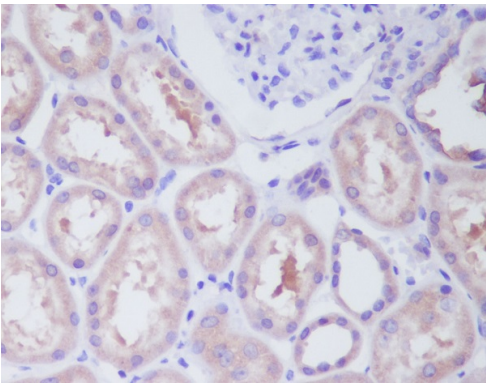
Application Details

WB 1:500~1:2000 IHC 1:50~1:200 ICC/IF 1:50~1:200

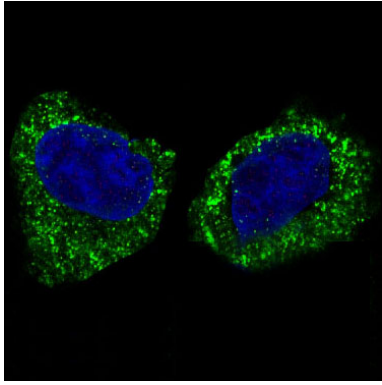
Images



Western blot analysis of IKK beta expression in HeLa cell lysate.



Immunohistochemical analysis of paraffin-embedded human kidney, using IKK beta Antibody.



Immunofluorescent analysis of HeLa cells, using IKK beta Antibody.

Product Description

IKK-beta is a kinase of the IKK family. Phosphorylates inhibitors of NF-kappa-B thus leading to the dissociation of the inhibitor/NF-kappa-B complex and ultimately the degradation of the inhibitor. Preferentially found as a heterodimer with IKK-alpha but also as an homodimer.

Background

IKK-beta is a kinase of the IKK family. Phosphorylates inhibitors of NF-kappa-B thus leading to the dissociation of the inhibitor/NF-kappa-B complex and ultimately the degradation of the inhibitor. Preferentially found as a heterodimer with IKK-alpha but also as an homodimer.

Note: This product is for in vitro research use only