

## ABL2 Rabbit mAb

Catalog No: #59235

Package Size: #59235-1 50ul #59235-2 100ul

Orders: order@signalwayantibody.com

Support: tech@signalwayantibody.com

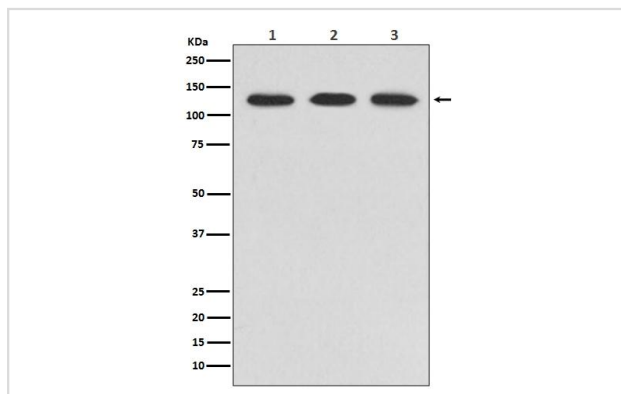
## Description

Product Name	ABL2 Rabbit mAb
Host Species	Rabbit
Clonality	Monoclonal
Clone No.	23B9
Isotype	Rabbit IgG
Purification	Affinity-chromatography
Applications	WB FC
Species Reactivity	Human Mouse Rat
Specificity	ABL2 Antibody detects endogenous levels of total ABL2
Immunogen Description	A synthesized peptide derived from human ABL2
Target Name	ABL2
Other Names	ABL2; ABL1; Tyrosine kinase ARG; kinase Arg;
Accession No.	Uniprot:P42684
Uniprot	P42684
Formulation	Rabbit IgG in phosphate buffered saline , pH 7.4, 150mM NaCl, 0.02% sodium azide and 50% glycerol.
Storage	Store at +4°C short term. Store at -20°C long term. Avoid freeze / thaw cycle.

## Application Details

WB 1:500~1:2000 FC 1:50

## Images



All Lanes: ABL2 Antibody at 1/ 1000 dilution. Lane1: HeLa cell lysate. Lane2: NIH/3T3 cell lysate. Lane3: PC-12 cell lysate. (Proteins at 20ug per lane) Secondary: Goat Anti-Rabbit IgG(HRP) at 1/20000 dilution Predicted band size : 128kDa Observed band size: 128kDa

## Product Description

ABL2 is a cytoplasmic tyrosine kinase which is closely related to but distinct from ABL1. The similarity of the proteins includes the tyrosine kinase domains and extends amino-terminal to include the SH2 and SH3 domains. ABL2 is expressed in both normal and tumor cells. The ABL2 gene product is expressed as two variants bearing different amino termini, both approximately 12-kb in length.

## Background

---

ABL2 is a cytoplasmic tyrosine kinase which is closely related to but distinct from ABL1. The similarity of the proteins includes the tyrosine kinase domains and extends amino-terminal to include the SH2 and SH3 domains. ABL2 is expressed in both normal and tumor cells. The ABL2 gene product is expressed as two variants bearing different amino termini, both approximately 12-kb in length.

---

Note: This product is for in vitro research use only