

LAMA3 Rabbit mAb

Catalog No: #59242

Package Size: #59242-1 50ul #59242-2 100ul

Orders: order@signalwayantibody.com

Support: tech@signalwayantibody.com

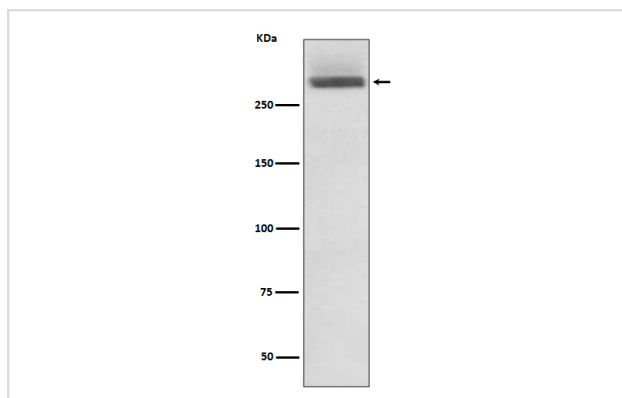
Description

Product Name	LAMA3 Rabbit mAb
Host Species	Rabbit
Clonality	Monoclonal
Isotype	Rabbit IgG
Purification	Affinity-chromatography
Applications	WB ICC/IF
Species Reactivity	Human
Specificity	LAMA3 Antibody detects endogenous levels of total LAMA3
Immunogen Description	A synthesized peptide derived from human LAMA3
Other Names	LAMA3; Laminin 5 alpha3; E170; LAMNA; LOCS; laminin alpha 3; Laminin A3;
Accession No.	Uniprot:Q16787
Uniprot	Q16787
Formulation	Rabbit IgG in phosphate buffered saline , pH 7.4, 150mM NaCl, 0.02% sodium azide and 50% glycerol.
Storage	Store at +4°C short term. Store at -20°C long term. Avoid freeze / thaw cycle.

Application Details

WB 1:500~1:2000 ICC/IF 1:50~1:200

Images



Western blot analysis of LAMA3 expression in HeLa cell lysate.

Product Description

Binding to cells via a high affinity receptor, laminin is thought to mediate the attachment, migration and organization of cells into tissues during embryonic development by interacting with other extracellular matrix components.

Background

Binding to cells via a high affinity receptor, laminin is thought to mediate the attachment, migration and organization of cells into tissues during embryonic development by interacting with other extracellular matrix components.

Note: This product is for in vitro research use only