

DCX Rabbit mAb

Catalog No: #59244

Package Size: #59244-1 50ul #59244-2 100ul

Orders: order@signalwayantibody.com

Support: tech@signalwayantibody.com

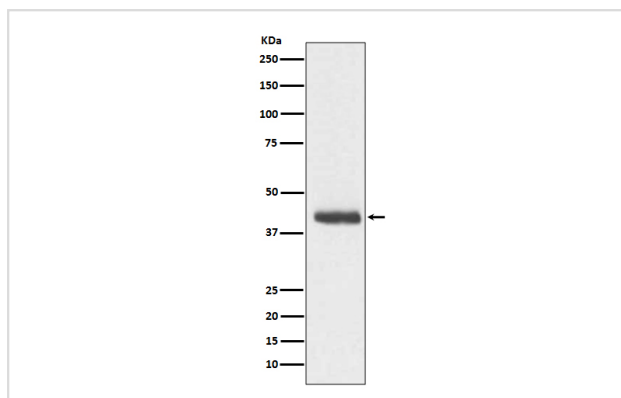
Description

Product Name	DCX Rabbit mAb
Host Species	Rabbit
Clonality	Monoclonal
Isotype	Rabbit IgG
Purification	Affinity-chromatography
Applications	WB FC
Species Reactivity	Human Mouse Rat
Specificity	DCX Antibody detects endogenous levels of total DCX
Immunogen Description	A synthesized peptide derived from human DCX
Other Names	DCX; DBCN; DC; LISX; SCLH; XLIS ; Dublin; doublecortin;
Accession No.	Uniprot:O43602
Uniprot	O43602
Formulation	Rabbit IgG in phosphate buffered saline , pH 7.4, 150mM NaCl, 0.02% sodium azide and 50% glycerol.
Storage	Store at +4°C short term. Store at -20°C long term. Avoid freeze / thaw cycle.

Application Details

WB 1:500~1:2000 FC 1:50~1:200

Images



Western blot analysis of DCX expression in C6 cell lysate.

Product Description

Mutations in Doublecortin cause Lissencephaly (smooth brain), a neuronal migration disorder characterized by epilepsy and mental retardation. Doublecortin is a microtubule associated protein that stabilizes and bundles microtubules. A conserved doublecortin domain mediates the interaction with microtubules, and interestingly most missense mutations cluster in this domain.

Background

Mutations in Doublecortin cause Lissencephaly (smooth brain), a neuronal migration disorder characterized by epilepsy and mental retardation. Doublecortin is a microtubule associated protein that stabilizes and bundles microtubules. A conserved doublecortin domain mediates the interaction with microtubules, and interestingly most missense mutations cluster in this domain.

Note: This product is for in vitro research use only