

HE4 Rabbit mAb

Catalog No: #59248

Package Size: #59248-1 50ul #59248-2 100ul

Orders: order@signalwayantibody.com

Support: tech@signalwayantibody.com

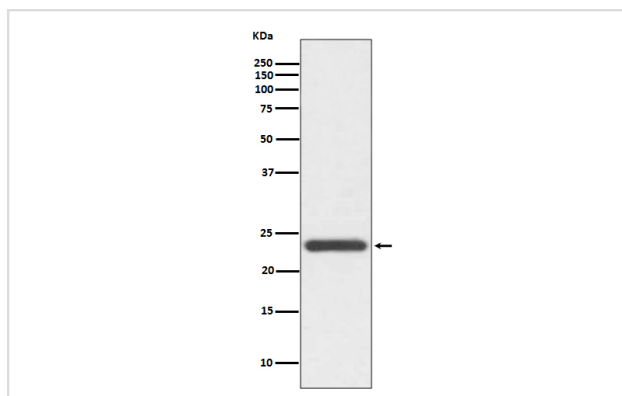
Description

Product Name	HE4 Rabbit mAb
Host Species	Rabbit
Clonality	Monoclonal
Isotype	Rabbit IgG
Purification	Affinity-chromatography
Applications	WB ICC/IF IP FC
Species Reactivity	Human Mouse
Specificity	HE4 Antibody detects endogenous levels of total HE4
Immunogen Description	A synthesized peptide derived from human HE4
Other Names	WFDC2; Epididymis-specific he4; Epididymal protein 4; DJ461P17.6; EDDM4; HE4; WAP5;
Accession No.	Uniprot:Q14508
Uniprot	Q14508
Formulation	Rabbit IgG in phosphate buffered saline , pH 7.4, 150mM NaCl, 0.02% sodium azide and 50% glycerol.
Storage	Store at +4°C short term. Store at -20°C long term. Avoid freeze / thaw cycle.

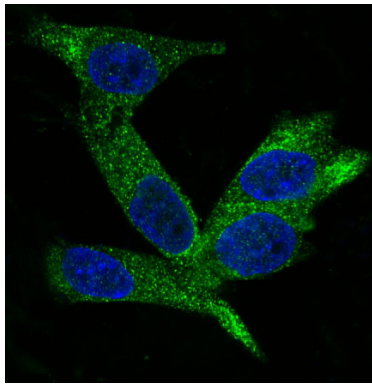
Application Details

WB 1:500~1:2000 ICC/IF 1:50~1:200 IP 1:50 FC 1:50

Images



Western blot analysis of HE4 expression in SW480 cell lysate.



Immunofluorescent analysis of SK-OV-3 cells, using HE4 Antibody.

Product Description

Expressed in a number of normal tissues, including male reproductive system, regions of the respiratory tract and nasopharynx. Highly expressed in a number of tumors cells lines, such ovarian, colon, breast, lung and renal cells lines. Initially described as being exclusively transcribed in the epididymis.

Background

Expressed in a number of normal tissues, including male reproductive system, regions of the respiratory tract and nasopharynx. Highly expressed in a number of tumors cells lines, such ovarian, colon, breast, lung and renal cells lines. Initially described as being exclusively transcribed in the epididymis.

Note: This product is for in vitro research use only