

VAMP8 Rabbit mAb

Catalog No: #59249

Package Size: #59249-1 50ul #59249-2 100ul

Orders: order@signalwayantibody.com

Support: tech@signalwayantibody.com

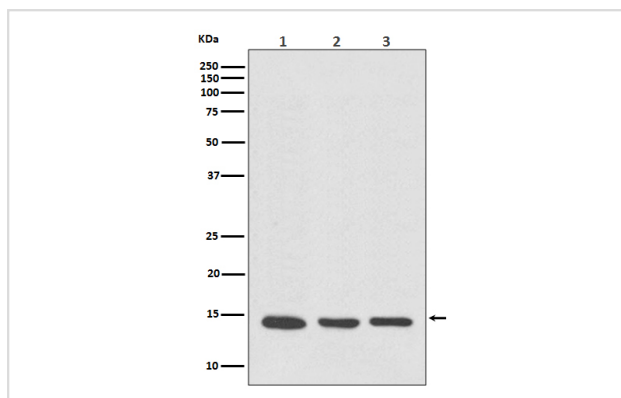
Description

Product Name	VAMP8 Rabbit mAb
Host Species	Rabbit
Clonality	Monoclonal
Isotype	Rabbit IgG
Purification	Affinity-chromatography
Applications	WB IHC ICC/IF IP FC
Species Reactivity	Human Mouse Rat
Specificity	VAMP8 Antibody detects endogenous levels of total VAMP8
Immunogen Description	A synthesized peptide derived from human VAMP8
Other Names	VAMP8; EDB; Endobrevin; VAMP-8;
Accession No.	Uniprot:Q9BV40
Uniprot	Q9BV40
Formulation	Rabbit IgG in phosphate buffered saline , pH 7.4, 150mM NaCl, 0.02% sodium azide and 50% glycerol.
Storage	Store at +4°C short term. Store at -20°C long term. Avoid freeze / thaw cycle.

Application Details

WB 1:500~1:2000 IHC 1:50~1:200 ICC/IF 1:50~1:200 IP 1:50 FC 1:50

Images



Western blot analysis of VAMP8 expression in (1) HeLa cell lysate; (2) NIH/3T3 cell lysate; (3) PC-12 cell lysate.

Product Description

Proteins in the soluble N-ethylmaleimide-sensitive factor attachment protein receptor (SNARE) complex are integral membrane proteins involved in vesicle transport and membrane fusion by pairing of vesicular SNAREs (v-SNAREs) with cognate target SNAREs (t-SNAREs). Vesicle associated membrane protein 8 (VAMP8), also known as endobrevin, is a v-SNARE originally found preferentially localized to early endosomes.

Background

Proteins in the soluble N-ethylmaleimide-sensitive factor attachment protein receptor (SNARE) complex are integral membrane proteins involved in vesicle transport and membrane fusion by pairing of vesicular SNAREs (v-SNAREs) with cognate target SNAREs (t-SNAREs). Vesicle associated membrane protein 8 (VAMP8), also known as endobrevin, is a v-SNARE originally found preferentially localized to early endosomes.

Note: This product is for in vitro research use only