

## Thymidine Kinase 1 Rabbit mAb

Catalog No: #59250

Package Size: #59250-1 50ul #59250-2 100ul

Orders: order@signalwayantibody.com

Support: tech@signalwayantibody.com

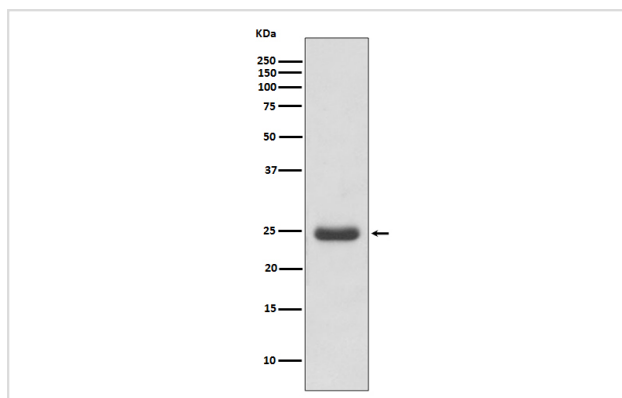
## Description

Product Name	Thymidine Kinase 1 Rabbit mAb
Host Species	Rabbit
Clonality	Monoclonal
Isotype	Rabbit IgG
Purification	Affinity-chromatography
Applications	WB IHC ICC/IF IP FC
Species Reactivity	Human
Specificity	Thymidine Kinase 1 Antibody detects endogenous levels of total Thymidine Kinase 1
Immunogen Description	A synthesized peptide derived from human Thymidine Kinase 1
Other Names	EC 2.7.1.21; KITH; TK-1; TK1; Thymidine kinase 1; cytosolic;
Accession No.	Uniprot:P04183
Uniprot	P04183
Formulation	Rabbit IgG in phosphate buffered saline , pH 7.4, 150mM NaCl, 0.02% sodium azide and 50% glycerol.
Storage	Store at +4°C short term. Store at -20°C long term. Avoid freeze / thaw cycle.

## Application Details

WB 1:5000~1:20000 IHC 1:50~1:200 ICC/IF 1:50~1:200 IP 1:20 FC 1:50

## Images



Western blot analysis of Thymidine Kinase 1 expression in Molt-4 cell lysate.

## Product Description

TK is a cytosolic thymidine kinase. Phosphorylated during mitosis. Its enzymatic activity is high in proliferating cells and peaks during the S-phase of the cell cycle; it is very low in resting cells.

## Background

---

TK is a cytosolic thymidine kinase. Phosphorylated during mitosis. Its enzymatic activity is high in proliferating cells and peaks during the S-phase of the cell cycle; it is very low in resting cells.

---

Note: This product is for in vitro research use only