

PDIA6 Rabbit mAb

Catalog No: #59252

Package Size: #59252-1 50ul #59252-2 100ul

Orders: order@signalwayantibody.com

Support: tech@signalwayantibody.com

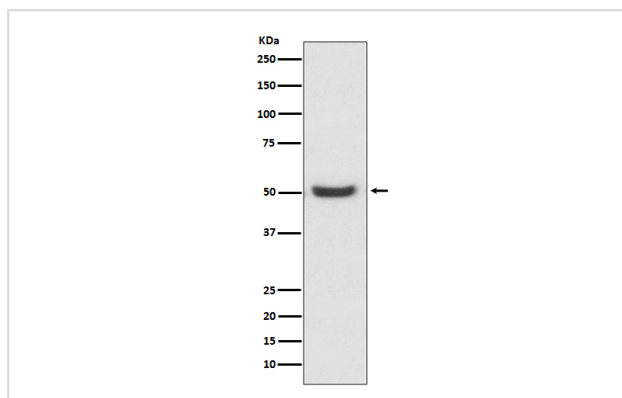
Description

Product Name	PDIA6 Rabbit mAb
Host Species	Rabbit
Clonality	Monoclonal
Isotype	Rabbit IgG
Purification	Affinity-chromatography
Applications	WB ICC/IF FC
Species Reactivity	Human Mouse Rat
Specificity	PDIA6 Antibody detects endogenous levels of total PDIA6
Immunogen Description	A synthesized peptide derived from human PDIA6
Other Names	PDIA6; ERP5, P5, TXNDC7; ER protein 5; ERp5;
Accession No.	Uniprot:Q15084
Uniprot	Q15084
Formulation	Rabbit IgG in phosphate buffered saline , pH 7.4, 150mM NaCl, 0.02% sodium azide and 50% glycerol.
Storage	Store at +4°C short term. Store at -20°C long term. Avoid freeze / thaw cycle.

Application Details

WB 1:500~1:2000 ICC/IF 1:50~1:200 FC 1:50

Images



Western blot analysis of PDIA6 expression in K562 cell lysate.

Product Description

May function as a chaperone that inhibits aggregation of misfolded proteins. Plays a role in platelet aggregation and activation by agonists such as convulxin, collagen and thrombin.

Background

May function as a chaperone that inhibits aggregation of misfolded proteins. Plays a role in platelet aggregation and activation by agonists such as convulxin, collagen and thrombin.

Note: This product is for in vitro research use only