

S100 alpha 6 Rabbit mAb

Catalog No: #59254

Package Size: #59254-1 50ul #59254-2 100ul

Orders: order@signalwayantibody.com

Support: tech@signalwayantibody.com

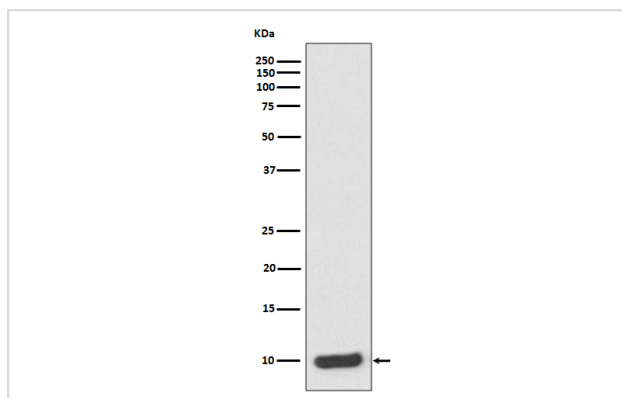
Description

Product Name	S100 alpha 6 Rabbit mAb
Host Species	Rabbit
Clonality	Monoclonal
Isotype	Rabbit IgG
Purification	Affinity-chromatography
Applications	WB IHC ICC/IF IP FC
Species Reactivity	Human Mouse Rat
Specificity	S100 alpha 6 Antibody detects endogenous levels of total S100 alpha 6
Immunogen Description	A synthesized peptide derived from human S100 alpha 6
Other Names	Protein S100-A6; Calcyclin; MLN 4; PRA; CACY; CABP; 5B10;
Accession No.	Uniprot:P06703
Uniprot	P06703
Formulation	Rabbit IgG in phosphate buffered saline , pH 7.4, 150mM NaCl, 0.02% sodium azide and 50% glycerol.
Storage	Store at +4°C short term. Store at -20°C long term. Avoid freeze / thaw cycle.

Application Details

WB 1:500~1:2000 IHC 1:50~1:200 ICC/IF 1:50~1:200 IP 1:50 FC 1:50

Images



Western blot analysis of S100 alpha 6 expression in HeLa cell lysate.

Product Description

S100A6 (calcyclin) is involved in a number of cellular processes, including exocytosis and cell cycle regulation. In addition, S100A6 interacts with a number of proteins such as SIP, GAPDH, and annexins in a calcium-dependent fashion. Research studies demonstrate that a down regulation of corresponding S100A6 gene expression causes a decrease in cell proliferation.

Background

S100A6 (calcyclin) is involved in a number of cellular processes, including exocytosis and cell cycle regulation. In addition, S100A6 interacts with a number of proteins such as SIP, GAPDH, and annexins in a calcium-dependent fashion. Research studies demonstrate that a down regulation of corresponding S100A6 gene expression causes a decrease in cell proliferation.

Note: This product is for in vitro research use only